

Nahant News

Fall 2022

Volume 16, Issue 4



Photo by C. Shirk



NAHANT MARSH
EDUCATION CENTER

4220 Wapello Ave. • Davenport, IA 52802
www.nahantmarsh.org • 563.336.3370

IN THIS ISSUE

4

**WELCOMING
FALL**

6

**SUMMER
RESEARCH
REVIEW**

8

**MEET
MADDIE!**

10

**BIRDING
WORKSHOPS**

11

**VOLUNTEER
SPOTLIGHT**

12

**UPCOMING
EVENTS**

About Nahant Marsh



Nahant Marsh preserve is one of the largest urban wetlands on the Upper Mississippi River. It is comprised of marshy areas, mesic, wet, and sand prairie, and bottomland forest.

The 305-acre preserve is owned by the City of Davenport and the Nahant Marsh Board, a 501(c)(3) nonprofit organization. Conservation and restoration efforts on the preserve are directed by the Nahant Board. The educational programming is overseen by Eastern Iowa Community Colleges (EICC).



NAHANT MARSH IN 2050

by Brian Ritter, *Executive Director*



This fall, Nahant Marsh and U.S. Army Corps of Engineers staff will be finishing the draft of our Master Plan. This new plan will help to serve as a vision for Nahant Marsh's several years to come. Our original Master Plan, completed in 1998, provided a great vision for Nahant Marsh's beginning. We have been able to achieve much of that early vision, so it is time to formulate our vision for the next few decades.

Because of our partnership with experts from the Corps, we were able to create a much more detailed plan that will better prepare us for the future by helping to identify assets, threats, and opportunities for improvement and expansion. As part of the planning process, experts from the Corps' team survey Nahant's watershed, sedimentation, and archeology, and made a series of recommendations based on their findings.

In late 2020, a series of meetings were held to gather feedback from the public. Comments from those meetings helped to guide the Master Plan. On October 19, we invite the public to join us again to review the draft of the new Master Plan. Experts from Nahant Marsh and the Corps will be present to share their findings and answer questions. The Master Plan will be available for the public to review and comment from October 19 to November 19. After comments are carefully reviewed, the final version of the Master Plan will be created and distributed in early 2023.

Nahant Marsh has come a long ways since its beginning in 2000. Originally, the preserve was only 78 acres and served only a few thousand people per year. By the end of this year, Nahant Marsh will be nearly 380 acres and will serve over 22,000 people. This plan will serve as a roadmap for ensuring that we continue to serve both the needs of our community while continuing to protect vital habitat for the 1,000+ different plants and animals that call Nahant Marsh home. In 2050, hopefully we will be celebrating what was accomplished with the 2022 Master Plan.

NAHANT MARSH **MASTER PLAN OPEN HOUSE**

October 19, 2022 | 2-4pm or 5-7pm

Nahant Marsh Education Center | 4220 Wapello Ave., Davenport, IA 52802

FALLING INTO THE NEW SEASON

by Amy Loving, *Director of Education*

Autumn is settling in at the Marsh as the landscape transforms from lush green and pops of bright florals to a sea of yellow, browns, oranges, and purples. A quick jaunt around the trails and one can observe a slew of busy critters such as bumble bees, honey bees, soldier beetles, and more as they visit the wildflowers. Recently, a large Chinese Mantis was netted, and we have been using it to teach students about the predatory traits of certain insects. We compare these traits to the structure and functions of other insect mouth parts: the straw-like proboscis of the Lepidoptera, the sponge-like tongue of some flies, or the chewing mouthparts of grasshoppers. Having real-life creatures truly enhances the student learning experience. For some, it may be the first time they have ever encountered such a large insect!

Now that the school year is underway, our education team is quickly filling schedules with almost-daily visits into classrooms and afterschool programs. Students will also be heading to the Marsh soon for field trips to study trees, leaves, seeds, migration, wild turkeys, and more. But students are not the only ones learning this fall; check out our calendar of events for a variety of hikes, classes, and workshops that perfect for all ages!



SUMMER RECAP

by Kinsey Nielsen, *Natural Resource Manager*



There were no shortage of natural resources projects this summer at Nahant! Staff, interns, and volunteers spent many days removing invasive species from the prairies including white and yellow sweet clover, Queen Anne's lace, poison hemlock, musk thistle, flowering rush, and many others. We also planted many native plants to enhance our prairies. Later in the summer, we harvested a few species of prairie seed, though most of our seed collecting occurs in the fall. Trail maintenance was ongoing and included mowing and trimming shrubs overgrowing the trails. Other projects included cleaning up trash along Wapello Ave. and South Concord, installing new interpretive signs, bi-weekly water quality testing at the marsh, rotating goats in our prairies to remove brush, and monitoring tree plantings in the mitigation banks. This fall we are looking forward to lots of seed harvesting and brush removal to improve the quality of Nahant's prairies!

SUMMER RESEARCH REVIEW

by Jimmy Wiebler, *Naturalist & Research Coordinator*

Every summer, Nahant Marsh offers internships to students who enroll in Eastern Iowa Community College's Louis Stokes Alliance for Minority Participation (LSAMP) research program. Students from various local colleges and universities (and sometimes high school) develop and carry out a scientific research project that not only helps them gain experience and improve their skills in the sciences but helps Nahant Marsh learn more about its local ecosystems. This summer, Nahant Marsh hosted seven student interns; their research findings are summarized below.



Mahaylee Bennitt (Eastern Iowa Community College) investigated what aquatic plants were hidden in the seed bank of submerged marsh muck. She used a plant growth chamber to grow seedlings from marsh sediment and identified 19 species of aquatic plants, including sessilefruit arrowhead (*Sagittaria rigida*), which had not yet been documented at Nahant.

Eli Suastegui (SIU Carbondale & Eastern Iowa Community College) used GPS trackers to determine how Blanding's turtles, a state-threatened species in Iowa, move across the landscape at Nahant Marsh. In his study, he discovered where Blanding's turtles are locally nesting, which enhances our ability to protect these sensitive locations. One Blanding's turtle that was being monitored could not be found, suggesting that it travelled outside the limits of detection and probably off Nahant property.



Ruben Pena (Eastern Iowa Community College) used acoustic song meters to detect the vocal presence of various bats at six different locations at Nahant Marsh. Ruben found nine Iowa bat species at Nahant, one of which, the Indiana bat, is federally endangered. He compared bat activity from 2021 to 2022 and found that there were fewer bat calls detected this year near a restoration area that had recently been logged of its dead ash trees.

SUMMER RESEARCH REVIEW, CNT.



Nicole Stocker (Eastern Iowa Community College) surveyed turtles to compare population trends in turtle abundance over the last ten years. She found that although fewer painted turtles, snapping turtles, and red-eared sliders are being captured in recent years, well over 1000 turtles have been captured to date. This summer, we caught a new adult Blanding's turtle that had not yet been captured in the 12 years that we have been surveying turtles!

Natalia Perez (Augustana College) used a drone with infrared imaging capabilities and GIS (geographical information system) analysis to create the first thermal image of Nahant Marsh. This aerial thermal image allows Nahant Marsh to easily visualize vegetation cover, and comparison of future images will aid in the detection of landscape changes over time.



Claudia Vaughn (Eastern Iowa Community College) studied the diversity of insects at Nahant Marsh. She augmented our insect collection for use in educational programming by capturing and pinning insects from various groups, including butterflies, moths, dragonflies, damselflies, beetles, true bugs, bees, wasps, mantises, walking sticks, and many more.



Joseph Struss (Eastern Iowa Community College) captured and identified zooplankton at Nahant Marsh and evaluated their biodiversity as it relates to the water quality of the marsh. Zooplankton are microscopic animals that play an important role in the food chain of aquatic ecosystems. He documented species from several taxa, including representatives of cladocera, rotifera, and copepoda. Rotifer species were found to be most abundant, which is in line with other researcher's findings of other wetlands.





Madeline Young

Madeline is Nahant's newest AmeriCorps Environmental Educator! She is a Davenport native and recent graduate from Augustana College with degrees in Cultural Anthropology and Classical Studies.

She is particularly interested in the social side of sustainability, as well as the ways in which Indigenous peoples protect our environment and natural resources. In college, she organized and ran Augustana's Local Agriculture Society and the Native and Indigenous Awareness Coalition, working to provide cultural events and opportunities for community engagement through organic agriculture.



In her spare time you can find Maddie in the pottery studio, taking a ballet class, or participating in local writing workshops and readings.

She is very excited to join the Nahant crew in providing quality environmental programming and education to the QC community.



SOUNDS OF FALL

by Allison Nodurft, *Naturalist*

Chamaecrista fasciculata, commonly known as partridge pea, can be seen blooming along the trails at Nahant Marsh as early as July. This member of the legume family has bright yellow flowers that are almost an inch across. The irregular arrangement of 5 petals and 6 purple anthers (male flower parts) inside the flower make it easy to identify.

The leaves resemble that of a Locust tree; they are in the same plant family, both being legumes. When touched, the leaves will fold together, giving this plant another common name of “sensitive plant.”

While the flowers can be easily seen throughout late summer, they are better heard in early fall. As a member of the legume family, they produce pods that contain square brown seeds. As this seed pod dries out, they burst open and spread their seeds for the next year. If you listen closely you will hear the seeds pop open; they also sound like maracas when brushed up against. Be sure to visit the marsh this fall to see (or rather, hear) them for yourself!



COMING SOON: BUILDING BETTER BIRDERS AND CITIZEN SCIENTIST WORKSHOPS



by Kelly McKay, Mark Roberts, Brian Ritter, and Jimmy Wiebler

Between September 2020 and February 2022, we conducted 100 “Building Better Birders and Citizen Scientists Workshops” across 26 counties in Iowa as part of a Resource Enhancement and Protection – Conservation Education Program (REAP-CEP) grant that we received from the state of Iowa. Although funded by REAP-CEP, this project was a collaborative partnership involving the Iowa DNR, BioEco Research and Monitoring Center, Clinton County Conservation Board, Nahant Marsh Education Center, Blevins Wild Bird Shop and Art Gallery, and the Clinton County Chapter of Pheasants Forever.

During this project, conducted in the middle of the raging COVID-19 pandemic, we had two primary attendance goals: 1) to interact with 900 total participants among the 100 workshops, and 2) to interact with 2,700 cumulative participants throughout these 100 workshops. The REAP-CEP Committee thought these were unrealistically high goals, especially amidst the pandemic. Nevertheless, when we completed our 100 workshops we had smashed both goals. These workshops had serviced 1,806 total and 3,098 cumulative participants! Additionally, all avian data collected during the course of these workshops were included in seasonal reports submitted to the Iowa Ornithologists’ Union. Consequently, these workshops also produced 1,056 citizen scientists! The success of this program was acknowledged as we were awarded the 2021 Iowa Ding Darling Environmental Education Award from the Iowa Association of Naturalists and the Iowa Conservation Education Coalition.

During the initial workshops, there were far more counties interested than we could possibly serve. Therefore, we submitted another REAP-CEP grant request this year to provide workshop opportunities to additional counties, and possibly even non-county affiliated nature centers. On June 24, the REAP-CEP Committee, in a 5-0 vote, approved us for another grant! As a result, we will be conducting the “Building Better Birders and Citizen Scientists Workshops 2” across 25 new counties or nature centers in Iowa from the fall of 2022 through the spring of 2024. Each county or nature center will host a series of 3 different workshops (for 75 total workshops) which will be free to the public. As with the initial program, host organizations will be able to build their own specific workshops choosing from several programming options including: various bird identification PowerPoint presentations based on species groups or habitat guilds, a variety of “public-friendly” avian research presentations, diurnal bird hikes of varying lengths, nocturnal “owl prowls,” and any other type of miscellaneous presentation or program conducted by the host organization.

All the collaborative partners from the initial workshops will be involved with this new series of workshops. Additionally, 2 new partners have joined in this collaborative effort: Cedar-Wapsi Chapter of Pheasants Forever and the Clinton County Conservation Foundation. We are also hoping to design a “Building Better Birders” Website, so that anyone will be able to find out when and where workshops will be held, as well as what each workshop will consist of in terms of programming. Stay tuned for more information as these new “Building Better Birders and Citizen Scientists Workshops” are developed.



VOLUNTEER NEWS

by Kelsi Massengale, *Volunteer Coordinator*

Seasonal Volunteer Highlight

We are excited to highlight the work of two incredible volunteers this season: Mark & Cindy Slater!

The Slaters have been volunteering at Nahant for many years, participating in cleanups, invasive species removal, seed harvesting, tree planting, and more.

Just this year, the two have logged over 50 hours of volunteer service and taken part in several projects. We are so appreciative of their hard work and smiling faces.

Thank you Mark & Cindy for all you do for the marsh!



Not a volunteer yet?

No worries, becoming a Nahant volunteer is easy! Just visit our website at www.nahantmarsh.org/volunteer-opportunities and complete an application. After applying, you'll be prompted to create a Nahant account so we can track your volunteer hours and send you all the upcoming volunteer opportunities through our monthly e-blast, *The Volunteer Buzz!*

Questions? Contact Volunteer Coordinator, Kelsi, at kmassengale@eicc.edu

CONGRATS COLIN!

Colin Shirk, a past AmeriCorps Naturalist, has recently started in his new role at Nahant Marsh as the Marketing & Events Coordinator! Colin is a Davenport native, and completed the Conservation Technology program through EICC in Spring of 2021. He then began a summer education internship at Nahant Marsh, and signed on for a full-time AmeriCorps Naturalist position immediately after. This July, Colin transitioned to his new position and has already spearheaded several successful Nahant events. We're excited to continue to have him on our team and can't wait to see him grow in this new role. Congrats again, Colin!



UPCOMING EVENTS

NATURE HIKE

Join a Naturalist for an interpretive trail walk through the Marsh. Hikes are offered year-round on the first Saturday of the month and give visitors an opportunity to learn more about the diverse flora and fauna of this unique natural area.

October 1, November 5, December 3 | 9-10am
Cost: Suggested Donation \$5

TODDLER TALES

A great way to introduce young children, ages 3-5, to the wonders of the outdoors! The first Wednesday of each month from April-October, Nahant educators will lead a nature-themed story, craft, and outdoor adventure. Join us from 10-11 am for this great program!

October 10: Terrific Turkeys
Cost: \$40 Members | \$50 Guests

BREAKFAST NATURE CLUB (BNC)

BNC meets year-round on the first Friday of the month. Enjoy a continental breakfast while listening to nature-themed presentations.

October 7: All About Owls
November 4: The Notorious Past of Nahant Marsh
December 2: Constellations & Astrology
Cost: \$5 Members | \$10 Guests

WILD WOODWORKING

Build a nature-themed project with Nahant Naturalist, Allison. All materials and tools will be provided. No woodworking experience necessary.

October 20: Pumpkin Planters
November 17: Wooden Sleds
December 15: Rustic Snowmen
Cost: Varies



MOVIES AT THE MARSH

Sponsored by RIA Federal Credit Union & Moonlight Flix, the evenings will begin with short nature documentaries, followed by showings of classic family friendly Halloween movies.

Donation-based concessions will be available throughout the movies.

October 13: Barn Owls by BBC & Casper
October 27: The Truth About Bats & Hocus Pocus



HOMESCHOOL

A monthly series of natural science classes designed to supplement at-home learning. The program activities are designed for grades K-8th. Classes meet once a month on Fridays from 2:30-4:00 pm.

October 28: Looking at Leaves
November 18: Turkey Triumph
December 16: Surviving Winter
Cost: \$7 Members | \$9 Guests

ORGANIC SILK SCARF WORKSHOP

Join Jean Johnson, award-winning local artist, for a fun session of dyeing silk scarves with natural materials like berries, flowers, vegetables, indigo, and turmeric. The results are unpredictable and quite beautiful. Take home two scarves in glass jars, with your choice of ingredients, undergoing the special dye process. When you open them two weeks later... surprise!

November 12 | 10am-12pm
Cost: \$35 Members | \$45 Guests



FOR MORE DETAILS AND TO SIGN UP, VISIT
www.nahantmarsh.org

2022 DONATIONS

Aaron Schulze	Elizabeth Loveless	Julie Farmer	Paul Mayes
Allen Ross	Emily Faltemier	Julie Malake	Paustian Enterprises
Amy Groskopf and Kent Turner	Erin Keppy	Kathleen and Alexander North	Perry Hansen
Amy Watters-Moeller	Estes Construction	Kathleen and Andy Lenaghan	Peter and Janet Peterson
Ann Werner	Fred and Martha Burnham	Kathleen McLaughlin	Peter Benson
Anonymous	Fred Priester	Kathy and Jim Phelan	Philip Zumaris
Becky Dexter	Gail Rinkenberger	Kathy Laird	Quad City Audubon Society
Betty Wood	Gary and Jeanne Ihlefeld	Kay Runge	Quoc Chu
Bohdan Dziadyk	Gene and Mollie Conrad	Kelly Drumm-Janoski	Randy and Carol Pribyl
Brian and Fawn Moncrief	George and Pat Olson	Kerry and Julie Smith	Remona Druhl
Brian Burkholder	Gretchen Waters	Kim Strunk	Rock Island County Soil & Water Conservation District
Brian Tugana	Hank and Becky Hartman	Kirsten Johnson	Sarah Moore
Brock and Carol Earnhardt	Heidi Parkhurst and Steve McCann	Kory Darnall	Schiller Family Foundation
Cal and Jill Werner	Helen and Geoff Macalister	Laurel Davis	Scott and Beth Tinsman
Candace Egger	Iowa Natural Heritage Foundation	Laurie Inghram	Scott County
Candace Ritchie	J Hobart Darbyshire	Lee Woodward	Sherry Staub
Carmen Minor	James and Teresa Mesich	Leland Searles	Sierra Club Eagle View Group
Caroline Kimple	James M Entwistle Jr. and Siv Brit Saetre	Lisa Dietz	Stephanie Allen
Christine Illichmann	Jane and Les Cox	Lynn Abel	Steve and Angie Gustafson
Chuck and Faye White	Jeff Shelley	Lynne Groskurth	Steve and Lora Kull
Claire Wilson	Jerome Mohr	Marcia Robertson	Steve Barnett
Clarice Wunderlich	Jerry and Julie Skalak	Mariann Reese	Stompbox Brewing
Claudia Scharf	Jerry Bald	Marilyn and Don Address	Sue and Bob Thoresen
Curtis Lundy	Jim Wester	Mark and Cindy Slater	Susan and Bill Tate
Cynthia Lucas	Jo Ann Whitmore	Mark and Kathy Kilmer	Susan Schwartz
Damion and Amy Sadd	Joe DeDecker	Mark and Rita Bawden	Tegan & Gary Trees
Darrell and Anne Thode	John and Amy Telleen	Martin Equipment Inc.	Terry Collins
Darren Speth	John and Joan Maxwell	Mary and James Pelzer	Thomas J. Mohr Charitable Fund
Davenport Branch and The Pribyl Group of Baird	John and Robin Jurich	Mary Ann and Thomas Stoffel	Thomas Nagle
David and Betty Zimmer	John Arter	Matt and Amanda Slavens	Thomas Thoms
David and Peg Iglehart	John Bowman	Michael Thoms	Tim Murphy
David Cooney	John Hintze and Tracey Kuehl	Mike Ryan	Todd and Amy Kersten
David Gaul	John McEvoy	Mindy Williams	Tom and Sue Leabhart
David Quinn	Jolinda Eggers	Moline Conservation Club Inc	Tony and Helen Schiltz
David Urush	Jon Backstrom	Nan Horsi	Tracey McLoone
Decker Ploehn	Jon Duyvejonck	Naomi Dewinter	Unitarian Universalist Congregation of the Quad Cities
Denise Bulat	Jonathan and Sarah Wilmshurst	Nathan and Elizbaeth Schramm	Will Moon
Dennis and Alice Mans	Josh and Kate Hoffman	Norm and Janet Moline	William Howe
Duncan J Cameron Family Foundation	Joyce & Tony Singh Family Foundation	Pat Tandy	Wynne and David Schafer
Eileen Smith		Paul and Kathy Brown	
		Paul Crosser	

2022 MEMBERS

Barbara Palen
 Bernadene Bowles
 Betty Wood
 Britt Vickstrom
 Carla Chapman
 Cathy White
 Chris Barnard
 Christine McCarthy
 Claudia Scharf
 Connie King
 David Schramm
 Eileen Smith
 Gail Rinkenberger
 Gary Ihlefeld
 Gayla Hickerson
 Isobel Osius
 Janice Hotz
 Jeff Shelley
 Jo Ann Whitmore
 John Walston
 Jonathan Jeschke
 Joseph Ambrose
 Judy Guenther
 Judy K Hartley
 Leo Moench
 Lorraine Seibert
 Lorrie Newman
 Lynne Allison
 Lynne Groskurth
 Marilyn Davis
 Mark Marmorine
 Nancy Orchard
 Pam Ohnemus
 Paul Crosser
 Remona Druhl

Rich Craddick
 Robert Loch
 Robin Orgeron
 Steve Kull
 Sue Albrecht
 Susan McPeters
 The Avise Family
 The Bloomquist Family
 The Bowman Family
 The Brodersen Family
 The Brown Family
 The Brus Family
 The Cook Family
 The Cooney Family
 The DeMay Family
 The Dorothy Family
 The Douglas Family
 The Fishwild Family
 The Flathman Family
 The Fuller Family
 The Gayman Family
 The Geenen Family
 The Godwin Family
 The Guldenzopf Family
 The Haars Family
 The Haas Family
 The Haddock Family
 The Halverson Family
 The Haney Family
 The Hartman Family
 The Heninger Family
 The Hervey Family
 The Hessenkemper Family
 The Hodge Family
 The Hulle Family

The Huston Family
 The Iavarone Family
 The Iglehart Family
 The Lee Family
 The Lenaghan Family
 The Moore Family
 The Muir Family
 The Nicole Family
 The North Family
 The Pappas Family
 The Pupillo Family
 The Revell Family
 The Roorda Family
 The Sadd Family
 The Schiltz Family
 The Schwartz Family
 The Scott Family
 The Slater Family
 The Strunk Family
 The Thielmann Family
 The Thompson Family
 The Tobin Family
 The Wagher Family
 The Wells Family
 The Wilbourne Family
 The Wille Family
 Virginia Parer
 The Scott Family
 The Slater Family
 The Strunk Family
 The Tobin Family
 The Wagher Family
 The Wille Family
 Virginia Parer

LIFETIME MEMBERS

Amy and Kevin Kay
 Ann Werner
 Anne Colville
 Bob Bryant
 Brian Ritter
 Brian Tugana
 Brock and Carol Earnhardt
 Cal and Jill Werner
 Chris and Mary Rayburn
 Curtis Lundy
 Darrell and Anne Thode
 David Linde
 Denise Bulat
 Dick Ryan

Elizabeth and Nathan Schramm
 Ellen Bluth
 Frank and Ann McCarthy
 Fred and Martha Burnham
 James and Cathy Van Fossen
 Jane and Les Cox
 John and Amy Telleen
 John and Joan Maxwell
 John and Liz Arter
 Jonathan and Sarah Wilmshurst
 Josh and Kate Hoffman
 Kathleen Logan

Kathy and Gary Morris
 Kathy Wine
 Marion Lardner
 Mary and Greg Schermer
 Michael and Hedy Hustedde
 Michael and Julia Angelos
 Michael Ryan
 Randy and Carol Pribyl
 Shirley Johnson
 Stan Reeg
 Sue and Bob Thoresen
 Thomas Thoms
 Tim Murphy
 Todd and Amy Kersten
 Tony and Joyce Singh

CORPORATE SPONSORS AND PARTNERS



Linwood Mining & Minerals Corp.



WESTERN ILLINOIS UNIVERSITY Quad Cities

2022 TRIBUTES

Ken and Sandra Brady in memory of Dick

Bob Bryant in memory of Georg W. "Jun" Fortune

Michael and Michelle Hahn in memory of Teresa Marxen

In memory of Richard A. Carstensen

Amy Waggoner

Elizabeth Brooke

Georgia Jecklin

James & Kathryn Nagle

Anonymous

William Burress

Eric Loeb

Brandon Patterson

Anne Balzer Powers

Donald Carlson

Curtis Lundy

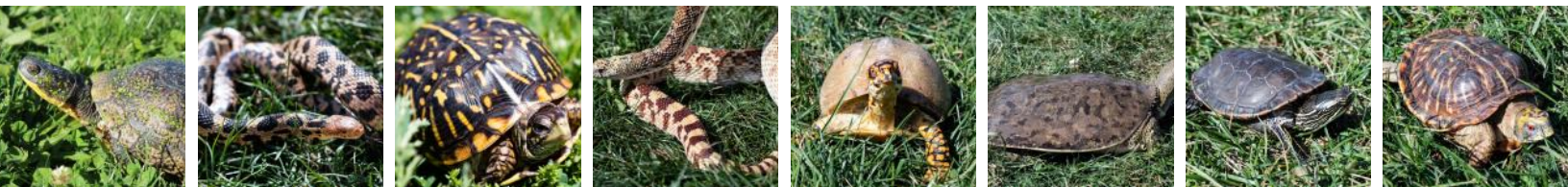
Margaret Taylor

Dianna Brenny

Joel Elliott

Helen Macalister

Ellen Urton



2022 ANIMAL ADOPTIONS

Buddy
Painted Turtle

Cassie Druhl

Captain
Blanding's Turtle

Cathy & John White

Mark & Lisa Cleve

Alicia Stowe

Oneida
Ornate Box Turtle

Sheri Colman in memory
of Brody Shelby

Rocky
Bullsnake

Liz Schramm in memory
of Shirley Horstmann

Squirtle
Ornate Box Turtle

Cathy & John White

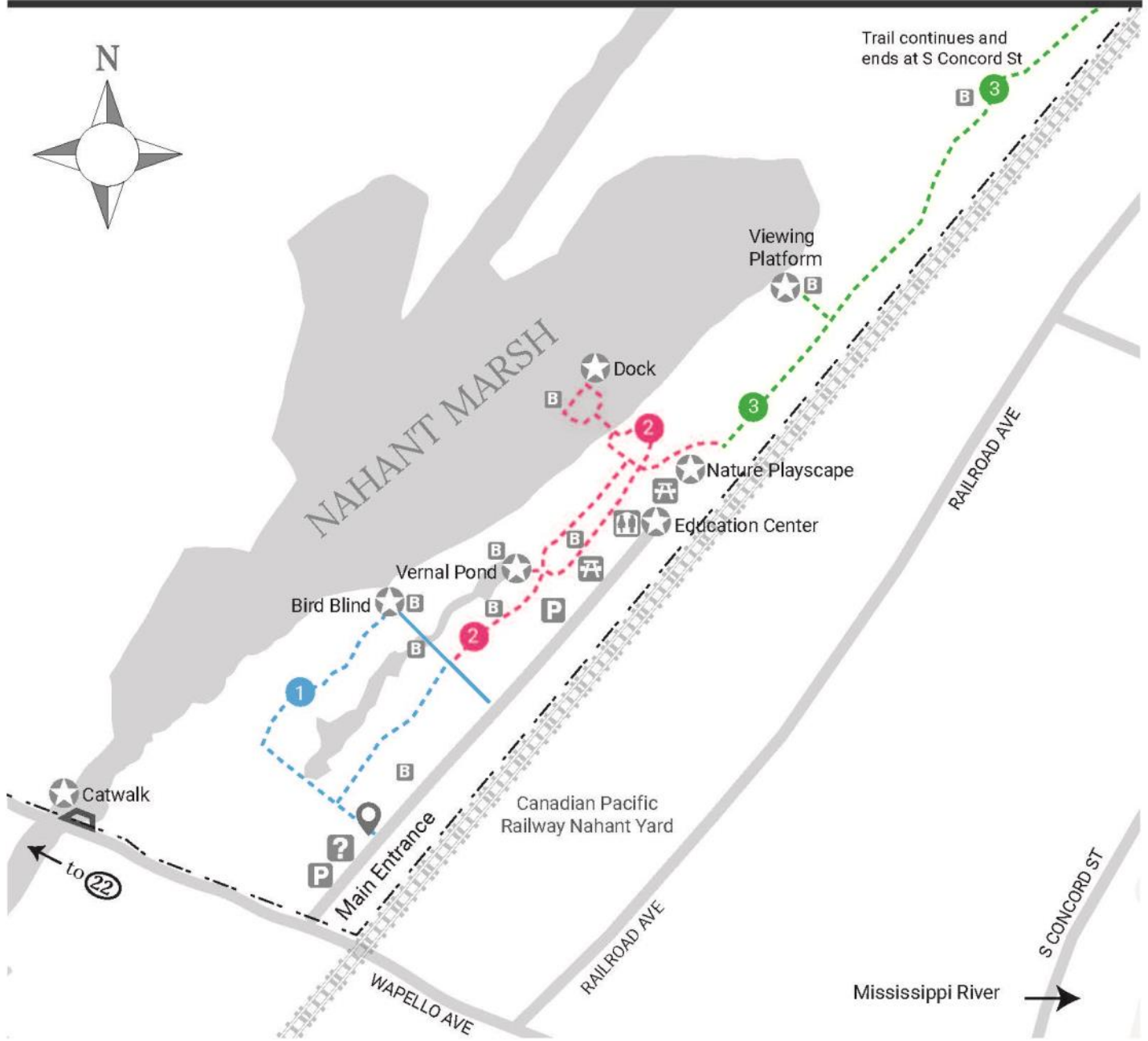
Sunny
Fox Snake
Cathy & John White

Bob
Three-Toed Box Turtle
Nicole Laurito

Animal Adoption Program

Nahant Marsh cares for more than a dozen turtle, snake, and frog Animal Ambassadors. As an ambassador, these animals represent their species allowing our education staff to educate the public about them. "Adopting" these animals help to support their ongoing care needs. Learn more about adopting an animal at nahantmarsh.org/adopt-an-animal/

Want to help another way? Check out our [Amazon Animal Care list!](#)



MAP KEY

- - - - Trail
- - - - Paved Trail
- - - - Road
- Point of Interest
- Info Kiosk
- Restrooms
- Trail Access Point
- Picnic Area
- Parking
- Bench
- Preserve Boundary
- Railroad

TRAIL NAME	LENGTH	TRAIL ACTIVITY	TRAIL FEATURES
1 Woodland Loop	0.4 mile	Hiking	Bottomland Forest, Tallgrass Prairie
2 Marsh Trail	0.4 mile	Hiking	Tallgrass Prairie, Marsh
3 East Trail	0.9 mile	Hiking	Sand Prairie, Bottomland Forest



EDUCATION CENTER HOURS

Monday–Friday: 8:30 am to 4:30 pm

Saturday: 9 am to noon

(extended to 3 p.m. April–October)

There is no fee to visit the Education Center, but donations are always appreciated.

PRESERVE HOURS

Open Daily from Sunrise to Sunset

If the main gate is locked, trails are accessible from the front parking lot.

Look for the opening in the fence near the kiosk.



GETTING TO NAHANT MARSH

**Nahant Marsh
4220 Wapello Ave.
Davenport, IA 52802**

From Davenport, Iowa—Take Highway 22 south (Rockingham Road), turning left on Wapello Avenue (the last turn before the I-280 overpass).

From Rock Island, Illinois—Take I-280 into Iowa to the Highway 22/Rockingham Road exit. Turn right onto Highway 22, and then right onto Wapello Avenue.

**Follow Wapello Avenue toward the river.
Nahant Marsh will be on the left just before the railroad crossing.**