

Nahant News

SPRING 2020

Volume 14, Issue 2



4220 Wapello Ave. • Davenport, IA 52802
www.nahantmarsh.org • 563.336.3370

Photo by J. Malake



NAHANT MARSH
EDUCATION CENTER

ABOUT NAHANT MARSH

Nahant Marsh
4220 Wapello Avenue
Davenport, IA 52802
563.336.3370
nahantmarsh@eicc.edu

www.nahantmarsh.org

STAFF DIRECTORY

BRIAN RITTER

Executive Director
britter@eicc.edu • 563.336.3372

AMY LOVING

Director of Education
aloving@eicc.edu • 563.336.3373

LIZ SCHRAMM

Operations Manager
eschramm@eicc.edu • 563.336.3374

SHANNON BERNHARD

Marketing and Events Coordinator
sbernhard@eicc.edu • 563.336.3379

KINSEY NIELSEN

Natural Resource Manager
ksnielsen@eicc.edu • 563.336.3375



CASSIE DRUHL

Administrative Assistant/Volunteer Coordinator
Partners of Scott County Watersheds Coordinator
cdruhl@eicc.edu • 563.336.3378



ALLISON NODURFT

AmeriCorps Educator
563.336.3370



JIMMY WIEBLER

AmeriCorps Educator and LSAMP Coordinator
jwiebler@eicc.edu • 563.336.3370



KELSI DENOYER

AmeriCorps Educator
kdenoyer@eicc.edu • 563.336.3370



EMILEE NOVAK

AmeriCorps Educator

KORY DARNALL

Natural Resources Technician II

ZACH STRONG

Natural Resources Technician II

MADELINE KULL

Natural Resources Technician I



Photo by J. Malake



NAHANT MARSH
EDUCATION CENTER

Nahant Marsh preserve is one of the largest urban wetlands on the Upper Mississippi River. It is comprised of marshy areas, mesic, wet and sand prairie, and bottomland forest. A spring-fed quarry, known as Carp Lake, and the surrounding grounds are part of the Nahant Marsh preserve as well. The 305-acre preserve is owned by the City of Davenport and the Nahant Marsh Board, a 501(c)(3) nonprofit organization. Conservation and restoration efforts on the preserve are directed by the Nahant Board. The educational programming is overseen by Eastern Iowa Community Colleges (EICC). EICC's Advanced Technology Environmental Education Center (ATEEC) is also a critical part of Nahant Marsh.



EASTERN IOWA COMMUNITY COLLEGES
CLINTON ♦ MUSCATINE ♦ SCOTT

FROM FLOODS TO PANDEMICS: ADAPTABILITY IS KEY

by Brian Ritter, *Executive Director*

Nahant Marsh is no stranger to disasters. The great flood of 2019 took its toll on wildlife and especially the woodlands at Nahant, but we were able to adapt and still serve 22,000+ people last year. The pandemic poses a new threat. While the flooding was largely a localized challenge, this pandemic is global. We do not know the exact toll the coronavirus will take on people and society, the economy, and the environment, but we at Nahant Marsh are doing our part to adapt to these extraordinary times and to continue to meet our mission of protecting the Marsh and connecting people to nature.

The 2019 floods forced us to be resourceful and challenged us to be resilient. The 2020 Coronavirus pandemic challenges us all to do the same. We have closed the education center to the public (trails remain open) and most of our staff are working remotely until at least April 13, 2020. We are running a limited crew to continue to provide trail maintenance, natural resource management, and to care for our education animals. The education staff is busy planning future events, creating new curriculum, and developing ways to continue to connect people to nature in different ways.

Nahant Marsh is also moving ahead with a major wetland restoration project. We have begun trash removal, grading, and trail construction on a 39-acre farm field that was purchased in 2018. This frequently flooded farmland is being retired and converted into wetlands, a sand prairie, and hiking trails. We have already graded and seeded 7 acres, and once the spring flooding recedes, the rest of the work will be completed. We hope to have this trail section open to the public by the fall.

During this unprecedented time in history, it's important to stay connected with your community and with the natural world. Fresh air, sunshine, and nature are great stress relievers during this trying time. As the author and naturalist Doug Peacock said, nature is our best remedy for "the metaphysical icky-poops." We look forward to seeing everyone at the marsh again soon. In the meantime, stay healthy, stay connected, and spend some time in nature.



Construction on the new 39-acre parcel. Photos by J. Wiebler.



RED-WINGED BLACKBIRD

by Jimmy Wiebler, *AmeriCorps Educator*



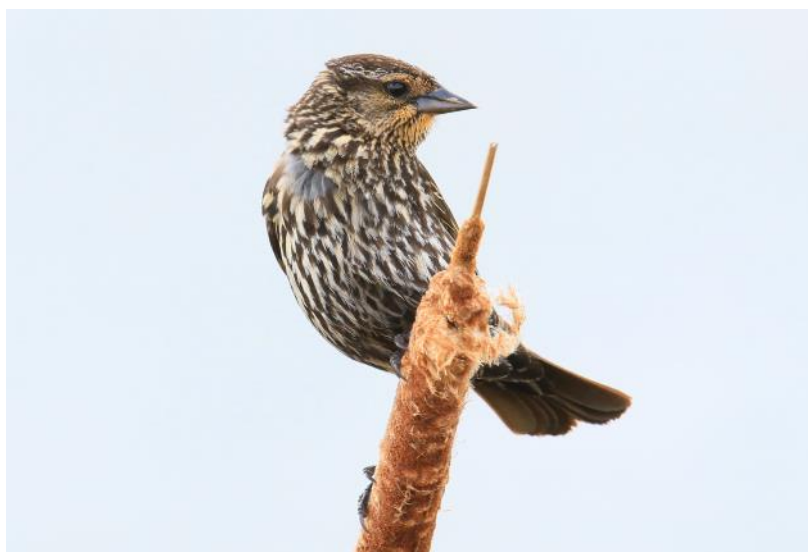
The song of a Red-winged Blackbird is an unmistakable sign of spring. Males are not hard to locate, as they can be found near any wetland or perched on telephone wires along country roads. During the breeding season, they will defend territories and attract mates by singing and flashing their bright red shoulder patches for which they get their name. They are highly territorial and can attack any passerby, from intruding birds such as crows and hawks, to runners and cyclists that frequent rural roads.

As a polygynous species, a male may host up to 15 females in his area. Females choose their mate based upon the dominance of the male and the nesting habitat he is defending, which should include food, water, and good cover, such as cattails or sedges in which to nest. Red-winged Blackbirds are sexually dimorphic, and females greatly differ from males in their appearance. Although males are all black with red and yellow wing patches, females are brown with dense streaking and may be confused with some sparrows.

Red-winged Blackbirds typically breed and forage for seeds and invertebrates in fields and marshy habitat. In the family Icteridae, which includes cowbirds, orioles, and grackles, the Red-winged Blackbird is our most widespread and numerous blackbird, and they can be found in all fifty states at some time during the year. Although these birds are numerous, they have been declining in recent years, possibly from loss of habitat.



Male Red-winged Blackbird. Photo by J. Malake



Female Red-winged Blackbird. Photo by L. Reis



SCHEDULE

Please join naturalist Jimmy Wiebler on one or several of our 2020 birding tours, which will be held on the fourth Saturday of each month. See page 10 for more details.

	May 23	June 27	July 25	
August 22	September 26	October 24	November 28	

MANAGEMENT TECHNIQUES

by Kinsey Nielsen, *Natural Resource Manager*

A variety of techniques are used to manage plants in the prairie and forest areas at Nahant Marsh. Each habitat and species is managed in a different way. Some of the possible techniques used include: prescribed fire, goat grazing, chainsaws, mowing, loppers, herbicide, and hand pulling. Usually the methods work best when several techniques are used to control aggressive species.



Goats eating the forest understory. October 8th, 2019. Photo by K. Nielsen.



Field 5 Burn Crew! Pictured (left-right): Cassie Druhl, EmiLee Novak, Maddie Kull, Kinsey Nielsen. November 25th, 2019. Photo by K. Nielsen.

Weather influences which management practices are able to be performed, and each season has different strategies implemented. Goat grazing, prescribed fire, and mowing are all examples of techniques that are performed on small sections of the preserve and are done on a rotational basis over the course of several years. The most challenging factor in managing Nahant Marsh, besides prolonged flooding, is the need for many volunteers to help with some of our large invasive species removal efforts! The progress we have made so far would not be possible without our countless volunteers throughout the years.



Zach Strong using a chainsaw to remove debris at the Clarke Property. February 5th, 2020. Photo by K. Nielsen.



Day of Caring volunteers use loppers to remove willow trees from a prairie. September 19th, 2019. Photo by K. Nielsen.

2020 SUMMER CAMPSby Amy Loving, *Director of Education*

Check out our amazing Summer camps! Campers must register by calling Eastern Iowa Community Colleges at 1-888-336-3907 or registering online at eicc.edu/summercamp. Scholarships are available - contact Amy at 563-336-3373 for info.

Nature Art Camp (Ages 8 - 12): Connecting nature, art, and doing your part to protect the earth. Campers will create various art projects from natural and recycled materials. Some projects include botanical dyes, crafting with willows, and upcycled wind chimes. Most projects are take-home.

June 10. 9 a.m. - 3 p.m..

Cost: \$45

Toadstools Camp (Ages 3-4): Hop on over to Nahant Marsh for a morning of nature exploring. Campers will meet live creatures and their wondrous world through hands-on activities, followed by an animal-themed snack.

June 16, July 28. 9 - 11 a.m.

Cost: \$20

Critter Camp (Ages 5-6): Connect your child with nature as they learn about insects, reptiles, and other critters. Children will be fully engaged with activities such as live animal encounters and outdoor explorations.

June 16, July 28. 1 - 4 p.m.

Cost: \$20

Nature Adventure Camp (Ages 7-10): Explore wetlands, woodlands, and prairies with the naturalists at Nahant Marsh. Campers will get hands-on experience learning about wildlife and practicing outdoor skills. This camp offers youth an opportunity to create memories and dig-in to nature.

June 22 - 26. 9 a.m. - 3 p.m.

Cost: \$200

Marsh Explorer Camp (Ages 7-10): Campers will be running amuck while exploring the Marsh and the creatures that live in and around the water. Be sure to bring your rubber boots!

June 18, July 16. 9 a.m. - 3 p.m.

Cost: \$45

Wilderness Skills Camp (Ages 11-14): In this camp, youth will explore the outdoors while learning practical survival skills. Activities will include fire building, shelter building, and navigation skills.

July 8-9. 9 a.m. - 3 p.m.

Cost: \$90

Prairies and Fairies Camp (Ages 8-12): Discover enchanting wild things and wildflowers as we immerse ourselves in the prairie. Campers will create fairy houses, learn about wildflowers, and collect beautiful, winged creatures.

July 23. 9 a.m. - 3 p.m.

Cost: \$45

Taste the Wild Camp (Ages 8-12): Getting back to the basics, kids will learn about local wild foods and how to safely identify them. We will also be creating dishes to flavor and savor.

July 30. 9 a.m. - 3 p.m.

Cost: \$45

Getting Buggy With It Camp (Ages 7-12):

Summer day camp focusing on butterflies, dragonflies, native bees, aquatic insects and more. Through a variety of hands-on, interactive field activities, camp will teach kids how amazing insects are. Campers will gain skills in the field and lab setting and will learn about insect conservation and the vital relationship between humans and insects.

August 5-6. 9 a.m. - 3 p.m.

Cost: \$90

THE
Community's
College



THE FIRST BLOOMS OF SPRING

by Allison Nodurft, *AmeriCorps Educator*



Skunk-cabbage (*Symplocarpus foetidus*) is a unique plant that grows in marshy swamps and blooms very early in spring. The greenish-yellow spadix or large, fleshy inflorescence appears and is enclosed by a reddish-brown spathe or leaf-like structure that is open on one side. The green, curled up leaves will appear after the plant flowers. In late spring, the leaves will unfold and cover the area with a blanket of cabbage-like leaves. Skunk-cabbage uses a special chemical reaction that allows the plant to reach temperatures of 60° Fahrenheit. This melts the snow around the plant, allowing it to bloom early. Skunk-cabbage has a foul odor, similar to decaying flesh. This scent attracts insects to pollinate it. While this plant doesn't grow at Nahant, it can be found at Ike's Fen in Geneseo, Illinois and Hanging Bog Nature Preserve in Palo, Iowa.



Photo by A. Nodurft



Photo by wildflower.org



Photo by wildflower.org

Resource:

Plant Database. (2019, December 20). Retrieved February 20, 2020, from https://www.wildflower.org/plants/result.php?id_plant=syfo

2019 BIRD COUNT AND VOLUNTEERS

by EmiLee Novak, *AmeriCorps Educator*



With migration starting and spring around the corner, we wanted to take the time to recognize the data collected by our volunteers Britt Vickstrom, Julie Malake, Kathleen Lenaghan, and Andy Lenaghan throughout the year of 2019. Without our volunteers, Nahant would not have the opportunity to analyze bird populations within the area.

Throughout the year, volunteers collected a total of 99 different bird species including waterfowl, songbirds, woodpeckers, and raptors. Waterfowl consisted of species like the American Coot, Bufflehead, Northern Shoveler, and Wood Duck. Songbirds varied from Palm Warblers to Indigo Buntings. Other documented songbirds included the American Goldfinch, Carolina Wren, Cedar Waxwings, and Swamp Sparrow.

Throughout Nahant, we see common woodpecker species, such as the Downy Woodpecker, Red-bellied Woodpecker, Pileated Woodpecker, and Red-headed Woodpecker. Lastly, the documented raptors consisted of the Bald Eagle, Osprey, Red-tailed Hawk, American Kestrel, and Cooper's Hawk. Other unique species volunteers and staff documented throughout the year consisted of Lesser Black-back Gull, Greater White-fronted Goose, Glaucous Gull, Northern Harrier, and Cackling Goose.



Palm Warbler. Photo by J. Malake



Wood Duck. Photo by J. Malake

VOLUNTEERS AT WORK

By Cassie Druhl, *Administrative Assistant/Volunteer Coordinator*

National Volunteer Week is April 19-25! There are several ways to get involved at Nahant Marsh this year:

Wildlife and plant observation/monitoring	Creating art displays	Large cleanup events
Trash pickup	Trail maintenance	Beautification
Staffing the Education Center on Saturdays	Invasive species removal	Cleaning the Education Center
Seed harvesting	Gardening	Research
Construction projects	Assisting with education programs	Joining the Friends of Nahant Marsh
	Assisting with events	

Nahant Marsh would like to give a special shout-out to Friends member and volunteer Britt Vickstrom (right). She regularly docents the Education Center, participates in Saturday bird counts, and provides the staff with delicious treats. She also worked tirelessly to ensure that our Oberholtzer Awards and Marsh Madness Trivia events had outstanding raffle prizes! Thank you, Britt!



Photo by C. Druhl

If you would like to learn more about volunteer opportunities that will be available at the Marsh this year, contact Cassie at cdruhl@eicc.edu.

AMERICORPS ACTIVITIES

by Kelsi DeNoyer, *AmeriCorps Educator*



Since the beginning, Nahant Marsh has hosted a number of AmeriCorps members and service terms. This year, there are four members: Kelsi DeNoyer, Allison Nodurft, EmiLee Novak, and Jimmy Weibler. All members work as Environmental Educators and provide educational opportunities through field trips, outreach, and public programs.

Every year, AmeriCorps celebrates its mission and efforts with AmeriCorps Week! From March 8th-14th, 2020, AmeriCorps members all across the nation will be working hard to share about the AmeriCorps program and its impact. Here at Nahant, we will be sharing our service experiences at multiple outreach programs, as well as promoting its amazing benefits and how to join. We will also be involved in some service projects to fulfill the AmeriCorps mission of serving and strengthening communities. Check in on our website and Facebook page to learn more and see some of the great things AmeriCorps do!



2020 AmeriCorps Members (EmiLee Novak, Jimmy Wiebler, Kelsi DeNoyer, and Allison Nodurft) with Director of Education Amy Loving. Photo by E. Schramm

UPCOMING FAMILY & YOUTH PROGRAMS



Due to health and safety concerns surrounding the COVID-19 virus, the Spring Celebration has been canceled for 2020.

Youth Programs

TODDLER TALES

Explore the wonders of the natural world with your early learner! Each month, we will learn about the outdoors through a story, craft, and snack. Ages. 3-5.

April 14 from 10-11 a.m.

May 12 from 10-11 a.m.

June 9 from 10-11 a.m.

Cost: \$4 Members / \$8 Guests. No fee for adults accompanying children.

HOME SCHOOL PROGRAMS 2019-2020

Nahant Marsh Education Center provides a monthly program specifically geared towards homeschool children. Each session is held the last Friday of the month (except for holidays). The purpose of the programs is to provide homeschool students with the opportunity to learn and explore nature. Students will be able to examine the value of nature, effects of humans on nature, and how to conserve nature.

Our homeschool program runs during the months of a typical school year from September – May and is geared towards grades K-8th. Each month presents a different topic and grades are separated and presented at appropriate levels. Depending on the subject matter, lessons will include slideshow, outdoor exploration, and engaging in hands-on activities.

April 24, and May 29 from 2:30-4 p.m.

Cost: \$8 per session or \$64 for the year for guests

Families in Nature

WHO LIVES IN A TREE?

Learn about the animals that make homes in trees.

May 9 from 10-11 a.m.

Cost: \$5 Members / \$10 Guests. No fee for adults accompanying children.

WATER BUG HUNT

Using dip nets, we will search the marsh for invertebrates like crawfish, water boatman, and shrimp. We may even catch a frog or two!

June 13 from 10-11 a.m.

Cost: \$5 Members / \$10 Guests. No fee for adults accompanying children.

Programs for All Ages

SPRING CLEANUP

Celebrate the 50th Anniversary of Earth Day by helping to spruce up Nahant Marsh during our annual cleanup. Projects will be both light and heavy duty. Gloves and bags will be provided. Volunteers will receive a T-shirt.



June 13 from 8:30-11:30 a.m.

To learn more and to register, visit www.xstreamcleanup.org.

SATURDAY GUIDED HIKES

Join a naturalist for a guided hike along the trails at the marsh. Hikes are offered on the first Saturday of the month and give visitors an opportunity to experience the environmental changes as the plants and wildlife adapt to the seasons. Whether you are a regular visitor or first-timer, there is always something to learn and experience at the marsh.

May 2, June 6 from 9-10 a.m.

Cost: \$5 suggested donation

Pre-registration for programs is strongly recommended, either online at www.nahantmarsh.org or by phone at 563.336.3370.





Due to health and safety concerns surrounding the COVID-19 virus, Marsh Madness Trivia has been postponed until a later date. Stay tuned to Nahant Marsh's website, email list, and social media for further details.

QC ENVIRONMENTAL FILM SERIES

See how innovative people confront the greatest challenges to the future of our planet. Five films will be shown at the Figge Art Museum.

April 26, May 17 at 4 p.m. at the Figge Art Museum (225 W 2nd St., Davenport, IA)

Cost: Admission to each film will be \$5 and a pass to all five films is available for \$20. Visit www.riveraction.org for more details.

FRIENDS OF NAHANT MARSH MEETINGS

On the last Wednesday of the month, our Friends group meets to discuss volunteer needs at the Marsh and get the latest updates from staff. Come to a meeting to see if you would like to join the Friends in their efforts!

April 29, May 27, June 24 from 6-7 p.m.

Cost: Free to attend first meeting, annual fee of \$15 required with Friends membership

MASTER CONSERVATIONIST PROGRAM

The Master Conservationist program uses field experiences and online training to cover a broad range of conservation issues and topics. These experiences help lowans make informed, intelligent choices for a lifestyle of stewardship. Topics include wildlife diversity, prairies and grasslands, woodlands, waterways, conservation practices, and planting the seeds of conservation. Participants receive 32 hours of online and outdoor hands-on education led by trained professionals in their field. Must be 18 or over to participate.

Tentative Dates:

April 1, 6-8 p.m.; April 15, 6-8 p.m.; May 2, 8 a.m.-12 p.m.; May 27, 6-8 p.m.; June 20, 7:15 a.m.-4:15 p.m.; July 8, 6-8 p.m.; July 22, 6-8 p.m.

Cost: \$135 Members / \$175 Guests

For more information, contact Nahant Marsh at nahantmarsh@eicc.edu or call 563-336-3370.

UPCOMING ADULT PROGRAMS

BREAKFAST NATURE CLUB

Learn the secrets of Iowa's wildlife during this monthly class at Nahant Marsh. A continental breakfast is included in the fee. Feel free to bring your own coffee mug or travel container. Programs are held on the first Friday of the month from 8-9 a.m.

May 1: Spring Wild Edibles

June 5: Turtle Research

Cost: \$5 Members / \$10 Guests

BIRD BANDING

It is migration time! Birds who flew south to overwinter are now making their way back to their summer nesting locations. This provides us with a wonderful opportunity to learn about these birds. Drop-in anytime and stay as long as you like to see Port Louisa National Wildlife Refuge Biologist Jessica Bolser band and release birds. This event is free and open to the public.

April 25 from 8-11 a.m.

Cost: Free

BIRDING WITH JIMMY

Experienced and beginner birders will enjoy this series of exploring bird populations at Nahant Marsh lead by Jimmy Wiebler, AmeriCorps Environmental Educator. Each season brings in new visitors to the Marsh, and the hikes will allow you to learn more about bird identification and behavior. Hikes will take place on the fourth Saturday of each month beginning in May and ending in November.

May 23, June 27 from 8-10 a.m.

Cost: \$5 Members / \$10 Guests



Pre-registration for programs is strongly recommended, either online at www.nahantmarsh.org or by phone at 563.336.3370.

ANIMAL WISH LIST

While the Education Center is closed to the public, staff are still working hard to ensure that all of our animals are fed, cleaned, and kept healthy! We are seeking donations of the following items to keep our animals happy and ready to greet all of our visitors when we reopen. Email nahantmarsh@eicc.edu with any questions or to coordinate dropping off your donation.

Food

- Tetra ReptoMin Floating Sticks Turtle & Amphibian Food
- Zoo Med Natural Aquatic Maintenance Formula Turtle Food
- Zoo Med Large Sun-Dried Red Shrimp Turtle Treats
- Zoo Med Canned Box Turtle Food
- Fluker's Orange Cube Complete Cricket Diet Reptile Supplement
- Fluker's Cricket Quencher Calcium Fortified Reptile Supplement

Heating & Lighting

- Zoo Med or Exo Terra Repti Basking Reptile Spot Lamp 75 Watt
- Zoo Med or Exo Terra Repti Basking Reptile Spot Lamp 50 Watt
- Zoo Med or Exo Terra Nocturnal Infrared Reptile Heat Lamp 75 Watt
- Zoo Med ReptiSun or Exo Terra UVB/UVA Compact Fluorescent Mini Reptile Lamp 13-26 Watt
- Zoo Med Mini Deep Dome Lamp Fixture
- Zoo Med Repti Deep Dome Lamp
- Zoo Med Deluxe Porcelain Clamp Lamp
- Zoo Med ReptiCare Terrarium

Controller Programmable Power Strip

- Tetrafauna Aquatic Reptile Aquarium Heater, 100-watt
- Zoo Med Turtletherm Aquatic Turtle Heater 300 watt
- AquaTop Titanium Heater w/Controller 400-500 watt

Substrate & Bedding

- Zoo Med Eco Earth Loose Coconut Fiber Reptile Substrate 24qt Bag
- Zoo Med Forest Floor Natural Cypress Mulch Reptile Bedding 24qt Bag
- Zoo Med Aspen Snake Bedding 24qt Bag
- Zoo Med Terrarium Moss
- Playground Sand

Health & Maintenance

- Zoo Med Reptisafe Reptile Water Conditioner
- API Turtle Fix Antibacterial Treatment 8oz Bottle
- API Turtle Sludge Destroyer Aquarium Cleaner 8oz Bottle
- Zoo Med Repti Turtle Eye Drops
- Vetericyn Plus Reptile Antimicrobial Wound Care Spray, 3-

oz bottle

- Zoo Med Repti Calcium with D3 Reptile Supplement
- Zoo Med Reptivite with D3 Reptile Vitamin
- Exo Terra Clarity & Odor Control Moss Ball for Turtles
- Zoo Med Dual Analog Thermometer and Humidity Gauge
- Extra thermometers and hygrometers

Habitat Accessories

- Zoo Med Turtle Docks size Large/Xtra Large
- Reptile Hides and Hutts
- Plastic Reptile, Aquarium, and Terrarium Plants/.Vines
- Zoo Med Natural Cork Tile Background, 18 x 24-Inch
- Zoo Med Natural Forest Cork Tile, Medium, 12 x 18-Inches
- Zoo Med Natural Cork Tile Background
- Exo Terra Background

One-Shot Wishlist Needs

- Zilla Jump-Start Caloric Supplement & Appetite Reptile Stimulant



Nahant is now taking applications for summer research interns! Research is an integral part of the work we do to preserve and maintain the amazing natural areas that we have at Nahant.

Nahant's research interns are funded through the Louis Stokes Alliances for Minority Participation (LSAMP). We have had many different projects in the past including turtle monitoring, goat grazing studies, mushroom surveys, wildlife monitoring, and various water quality projects. Students will be responsible for designing their project, carrying out the research, and making a poster of their results.

The deadline to apply is **April 24!** Any student is allowed to participate, but there is compensation available for students that meet the qualifications of the LSAMP grant. For more information, please contact Jimmy Wiebler at jwiebler@eicc.edu or visit our website at www.nahantmarsh.org/programs/research.



Blanding's turtle.

WITH APPRECIATION

2020 DONATIONS

Anonymous	Wynne Schaffer
Ashley Allen	Nathan & Elizabeth Schramm
Lynne Allison	Monte Scott
Drake & Shannon Bernhard	Leland Searles
Ellen Bluth	Kevin Smith
Rebecca Brooke	Larry Stone
Bob Bryant	Mike Stopulos
Denise Bulat	Kim Strunk
Fred & Martha Burnham	Kent Turner
Jane Cox	Elizabeth Van Camp
Susan Daley	Joel Vanderbush
Nicholas De La Cruz	Janice Welch
Michael Duffy	Ann Werner
Ann Duffy	Mark Werning
Barbara Fortune	Karra Wester
Michael Garvis	Cathy White
David Gaul	Jonathan and Sarah Wilmschurst
Linda Goff	Waste Commission of Scott County
Amy Groskopf	
Steve Gustafson	
Eric & Kelly Heims	
Randall Hervey	
Joshua & Kate Hoffman	
Amy & Kevin Kay	
Nadine Kupresin Coon	
Kathleen Logan	
Amy Loving	
Marsha Loving	
Curtis Lundy	
Geoff & Helen Macalister	
Joe Martin	
Sean Moeller	
Norm & Janet Moline	
Kathy Morris	
Nicolina's Turtle Company	
Fred Priester	
Stan Reeg	
Damion & Amy Sadd	

2020 OBERHOLTZER AWARDS DONATIONS

360 Steel	Turner
Active Endeavors	Illuminate Reiki
John and Liz Arter	Iowa Cubs
Bass Pro Shops	Joyce & Tony Singh Family Foundation
Blank Park Zoo	Kelly McKay
Bucktown Revue	Midwest Ale Works
Cassie Druhl	Necker's Jewelers
Chanda Massengale	Gay Lundy
Circa '21	Pete Peterson's Wild Bird Shop
Crane and Pelican	Renwick Mansion
Cru	Scheels
El Bait Shop/High Life Lounge	Scot & Karen Schaar
Expressions Jewelers	Spa at Hotel Blackhawk
Farm & Fleet	Theisens
Fetography Professional Imaging	Tim Sinclair
Float Quad Cities	US Adventure RV
Greater Des Moines Botanical Center	Wallace's Garden Center
Green Tree Brewery	Wide River Winery
Amy Groskopf & Kent	Jonathan and Sarah Wilmschurst



Photo by J. Malake

WITH APPRECIATION (continued)

2020 MEMBERSHIPS

Catherine Alexander	Nancy Flaherty	Mark and Marilyn Marmorine	Mark and Cindy Slater
Lynne Allison	Tom Fritz	Mac McDonald	Eileen Smith
John and Liz Arter	Ann Gaydosh	Cathy Meehan	Carey Smysor
Marilynn Bartles	Linda Goff	Kendra Mercer	Sam and Amanda Smysor
Anne and Ken Basken	Lynne Groskurth	Barbara and Carvel Morgan	Austin Swanson
Kristen Bergren	Judith Guenther	Pam Ohnemus	Julie Swanson
Barbara Biggs	Patricia Halverson	Paige Owings	Britt Vickstrom
Sharon Blott	Beth Harris	Gail Paarmann-Nikulski	Patrick Wendt
Casey Bowden	Kelly Harrouff	Barbara Palen	Rich Wilker
Bernadene Bowles	Judy Hartley	Kim and Michael Pepping	Lee Ann and Wayne Wille
John and Kathy Bowman	Ralph and Gail Heninger	Heather and Eric Perry	Cathy White
Heather Brady and Bella Balunis	Randy and Connie Hervey	Sherif and Teri Ragheb	JoAnn Whitmore
Kathy and Paul Brown	Betsy Huston	Gail Rinkenberger	Betty Wood
Denise and Carl Bulat	Dave and Peg Iglehart	Bill Robbins	Lisa Woolridge
Carla Chapman	Art and Jan Jackson	Rene Robinson	
Anne Colville	Mary Johannsen and Tom	Damion and Amy Sadd	
Blake Connolly and Vered Holl	McBride	Mary and Greg Schermer	
Linda Cook	Mary and	Tony and Helen Schiltz	
Les and Jane Cox	Shirley Johnson	David Schramm	
Rich Craddick	Pam Kaufman	Leo Schubert and Susan	
Paul Crosser	Amy, Kevin, and George Kay	Sharer	
Marilyn Davis	Karen Kelly	Julie Schumann	
Pete Devlin	Anne Landaverde	Susan Schwartz	
Candace Egger	Kathleen and Andy Lenaghan	Victoria Sisco	
	Robert Loch	Jerry and Julie Skalak	

2020 ANIMAL "ADOPTIONS"

Nicolina's Turtle Company "adopted" Picasso, Captain, and Micheline

Cathy White "adopted" Captain and Squirrel

Marsha and Bill Loving "adopted" Sunny

Elizabeth Van Camp "adopted" Squirrel

CORPORATE SPONSORS AND PARTNERS

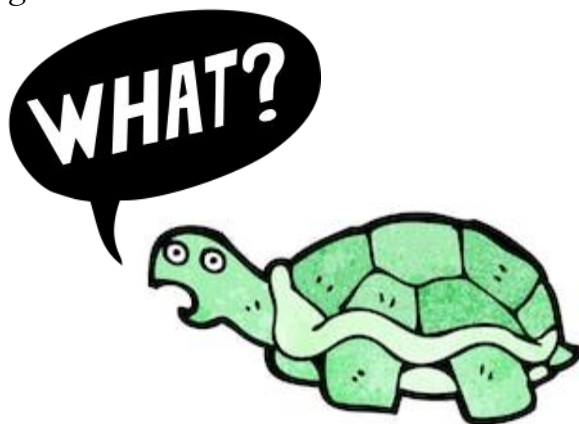


SPRING NATURE NOOKby Kelsi DeNoyer, *AmeriCorps Educator*

Welcome to the Nature Nook! This is a place where you can find tips to be more sustainable, interesting nature facts, new natural areas to explore, and more; the only rule here is to be all about nature!

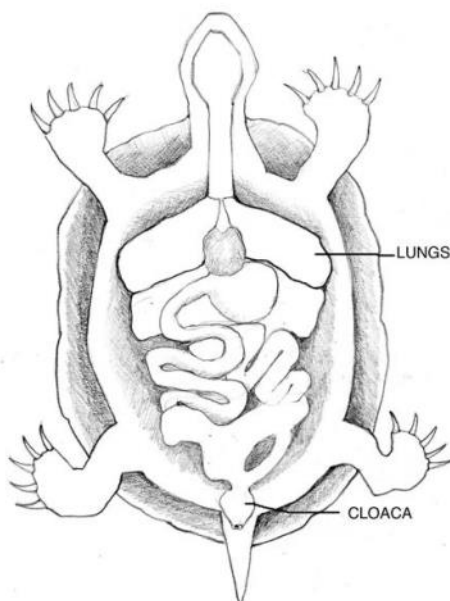
As we transition from winter to spring, here's a fun fact to keep in mind:

Some turtles can breathe through their butts!



Yup. You read that right. In the winter, freshwater aquatic turtles will go into hibernation by burrowing into the mud or sand at the bottom of the lake or pond they live in. During this time, their metabolism slows down dramatically, so they require less energy and oxygen, but they still need a way to breathe, right? Well, that's where their bottoms come into play.

All turtles have a special body part called a cloaca (pronounced clo-ay-ka), which essentially acts as a one-stop-shop for their excretory, intestinal, and reproductive needs. During hibernation, it is also responsible for respiration; as the cloacal muscles expand and contract, surrounding water is pulled in and pushed back out. The cloaca has a high-density lining of blood vessels, so as it is breathing in the water, the oxygen is able to be absorbed, allowing them to stay nice and cozy underwater until springtime comes.



Source: Northern Woodlands Magazine

So there you have it- turtle butt breathing!

MAP YOUR ADVENTURE



EDUCATION CENTER HOURS

Monday–Friday from 8:30 a.m. to 4:30 p.m. and Saturdays from 9 a.m. to noon (extended to 3 p.m. April–October)

There is no fee to visit the Education Center, but donations are always appreciated.

PRESERVE HOURS

Open Daily from Sunrise to Sunset

If the main gate is locked, trails are accessible from the front parking lot. Look for the opening in the fence near the kiosk.



GETTING TO NAHANT MARSH

**Nahant Marsh
4220 Wapello Ave.
Davenport, IA 52802**

From Davenport, Iowa—Take Highway 22 south (Rockingham Road), turning left on Wapello Avenue (the last turn before the I-280 overpass).

From Rock Island, Illinois—Take I-280 into Iowa to the Highway 22/Rockingham Road exit. Turn right onto Highway 22, and then right onto Wapello Avenue.

**Follow Wapello Avenue toward the river.
Nahant Marsh will be on the left just before the railroad crossing.**