

# Nahant News

**FALL 2019**

Volume 13, Issue 4



4220 Wapello Ave. • Davenport, IA 52802  
[www.nahantmarsh.org](http://www.nahantmarsh.org) • 563.336.3370

Photo by J. Malake



## ABOUT NAHANT MARSH

Nahant Marsh  
4220 Wapello Avenue  
Davenport, IA 52802  
563.336.3370  
nahantmarsh@eicc.edu

[www.nahantmarsh.org](http://www.nahantmarsh.org)

### STAFF DIRECTORY

#### BRIAN RITTER

Executive Director  
britter@eicc.edu • 563.336.3372

#### AMY LOVING

Director of Education  
aloving@eicc.edu • 563.336.3373

#### LIZ SCHRAMM

Operations Manager  
eschramm@eicc.edu • 563.336.3374

#### SHANNON BERNHARD

Marketing and Events Associate  
sbernhard@eicc.edu • 563.336.3379

#### KINSEY NIELSEN

Natural Resource Manager  
ksnielsen@eicc.edu • 563.336.3375



#### CASSIE DRUHL

Administrative Assistant/Volunteer  
Coordinator  
Partners of Scott County Watersheds  
Coordinator  
cdruhl@eicc.edu • 563.336.3378



#### ALLISON NODURFT

Full-time AmeriCorps Educator  
563.336.3370



#### JIMMY WIEBLER

Full-time AmeriCorps Educator  
jwiebler@eicc.edu • 563.336.3370



#### KELSI DENOYER

Part-time AmeriCorps Educator  
kmassengale@eicc.edu • 563.336.3370

#### EMILEE NOVAK

Natural Resources and Education Intern

#### KORY DARNALL

Natural Resources Technician II

#### ZACH STRONG

Natural Resources Technician II

#### MADELINE KULL

Natural Resources Technician I



Nahant Marsh preserve is one of the largest urban wetlands on the Upper Mississippi River. It is comprised of marshy areas, mesic, wet and sand prairie, and bottomland forest. A spring-fed quarry, known as Carp Lake, and the surrounding grounds are part of the Nahant Marsh preserve as well. The 305-acre preserve is owned by the City of Davenport and the Nahant Marsh Board, a 501(c)(3) nonprofit organization. Conservation and restoration efforts on the preserve are directed by the Nahant Board. The educational programming is overseen by Eastern Iowa Community Colleges (EICC). EICC's Advanced Technology Environmental Education Center (ATEEC) is also a critical part of Nahant Marsh.





---

## NATURE NEEDS YOU! (AND YOU NEED NATURE)

by Brian Ritter, *Executive Director*

We are fortunate to have some incredible natural areas in the QCA. These places serve as a refuge for both wild species and for us humans. They add to the quality of our life by providing us with clean air, clean water, recreation, improved health, and inspiration. We need nature.

New research has found what a lot of naturalists already knew: Nature is good for us. This research has shown that when people spend time in nature, the following impacts have been observed:

- ✓ Improved mood
- ✓ Improved attention
- ✓ Decreased stress levels
- ✓ Improved physical health and immune function

And nature doesn't just improve health and the environment; it also helps local economy. A 2011 Iowa State University study found that outdoor recreation added \$1.1 billion to our economy and over 30,000 jobs just in Iowa. Additionally, several studies have found that young professionals are drawn to regions with nature and outdoor amenities. To attract and retain talented workers, our area needs nature.

But these special natural areas are small and scattered today. In order to maintain the diversity, beauty, and functionality of our natural ecosystems, nature needs you. Fragmented habitat, pollution, and invasive species are all major threats to our natural places. Lending your time, talent, or treasure to protect these areas will ensure that these places will exist for generations to come. How to help: donate, learn more, or volunteer!

### Nature Therapy at Nahant Marsh

Wildlife and Plant  
Observation/Monitoring

Hiking

Trash Pickup

Joining the Friends Group

Seed Harvesting

Construction Projects

Creating Art Displays

Trail Maintenance

Invasive Species Removal

Assisting with Education Programs

Assisting with Events

Research

Gardening

Beautification

---

EmiLee Novak is a graduate student in the Recreation, Parks and Tourism Administration program at Western Illinois University (WIU) in the Quad Cities. EmiLee is a graduate assistant for Nahant Marsh and focuses on environmental education programs, along with helping the natural resource team on projects throughout the marsh. Outside of school, EmiLee finds herself birding, kayaking, or hiking. She has a strong passion for avian species, and her favorite bird is the Great Horned Owl. Before attending WIU, EmiLee went to Upper Iowa University, where she got her bachelors degrees in Environmental Science and Conservation Management (2019) and to Kirkwood Community College, where she got her associate degree in Parks and Natural Resources (2017). When EmiLee graduates from WIU, she would like to obtain a doctorate degree so that she can teach at a university in the natural resources field.

Photo by E. Novak

### MEET EMILEE!



## LSAMP RESEARCH AT NAHANT MARSH

by Jimmy Wiebler, *AmeriCorps Naturalist and LSAMP Research Coordinator*

Research is an integral part of Nahant Marsh's mission to protect, enhance, and restore Nahant Marsh. Each summer, the marsh offers 12-week research internships to students through the Louis Stokes Alliance for Minority Participation (LSAMP) program. LSAMP is a National Science Foundation-funded program designed to increase the number of bachelor's and master's degrees awarded to historically underrepresented minorities that major in science, technology, engineering, and mathematics. The ultimate goal of this initiative is to increase the diversity of our workforce in these disciplines. Nahant Marsh is partnered with Eastern Iowa Community Colleges, which are a part of the 16 colleges and universities in the alliance's Midwest region comprised of three states (Iowa, Illinois, and Nebraska). Summer of 2019 turned out to be a great season, and a summary of our findings are presented below:



Yajaira Navarro from Scott Community College (transferring to Iowa State University) and Julia Vanhouten (Black Hawk College) monitored turtle populations at the marsh and used radio telemetry to track the movements of captured Blanding's turtles, a state-threatened species in Iowa. They found that Blanding's turtles tended to reside in beaver-created wetlands at Nahant Marsh, as opposed to our main marsh. Learning the turtles' movement patterns and overwintering and nesting locations helps us continue to protect this species that is threatened in Iowa and endangered in Illinois.



Katherine Soliz and Caity Costner, both from Augustana College, aimed to determine the effect of flooding on the diversity of insects at Nahant Marsh. Although flooding didn't appear to have an effect, they found that insect diversity at the marsh was equal to that found in a remnant prairie at Fairmount Cemetery in southwest Davenport, IA.



As an urban marsh affected by adjacent rail yards, factories, and agriculture practices, it is important for us to continually monitor the water quality of our wetlands. Emily Myers (attending St. Ambrose University and Scott Community College) found that nitrite, nitrate, and phosphate levels remained relatively low throughout the summer. These molecules can enter our wetlands in large quantities from excessive fertilization of crops, causing excessive algae growth and lower oxygen levels in our water, which is detrimental to the wildlife that lives in the marsh. Excessive flooding during the spring of 2019 prevented adjacent farm fields from being used, which ultimately yielded low levels of these molecules and better water quality for Nahant Marsh.

(continued on next page)



Photos by J. Wiebler



## LSAMP RESEARCH AT NAHANT MARSH (continued)

Jacob Bell from Augustana College studied whether flooding could be used as a management tool to remove invasive species such as reed canary grass. More research is needed, but anecdotal evidence suggests that flooding has set back major stands of this invasive species (and others) at Nahant, allowing more of our native species to thrive.

Alyssa Bushman from Augustana College surveyed bats at strategic locations across Nahant Marsh's 305 acres. She found nine different bat species, including the northern long-eared bat (federally threatened) and Indiana bat (federally endangered), suggesting that Nahant Marsh provides critical habitat for bats, including species of special conservation concern.



Photos by J. Wiebler



Mikee Pagdanganan from Augustana College (transferring to DePaul University) studied microhabitat preferences of snakes at Nahant Marsh, and she found that while garter snakes prefer sunny locations where temperatures range from 80 to 85°F, brown snakes appear to be more selective, as they preferred shaded habitats near 80°F. Learning the habitat preferences of our local species may help Nahant Marsh personnel make better management decisions about habitat conservation in the future.



## EDUCATION UPDATE

by Amy Loving, *Director of Education*

The education team has welcomed a new full-time AmeriCorps member, Allison Nodruft, and we are excited that Jimmy Wiebler and Kelsi DeNoyer will be renewing their terms for another year. Next spring, we will be looking to hire a new half-time member to get us through the busy season.

As we get into the swing of the new school year, our crew has begun this semester's after-school programs. We are also seeing an increase in fall field trips. Some schools who were not able to come earlier due to spring floods are excited to experience Nahant in autumn.

There is so much to learn in fall –grasshoppers are abundant, making for easy catching for our young learners, and the marsh is preparing for colder times. Birds and Monarchs are also making their journey south, providing us with an excellent example of the phenomenon of migration. Field trip season will taper off in mid-October, but we will continue seeing students through classroom and outreach programming.

If all of this sounds fun to you, please consider volunteering on the education team! Contact me for more info: [aloving@eicc.edu](mailto:aloving@eicc.edu).



Photo by Amperage



## VOLUNTEERS AT WORK

By Cassie Druhl, *Administrative Assistant/Volunteer Coordinator*

Our volunteers were hard at work this summer! Following the historic Flood of 2019, there was a lot to be done to clean up the marsh. Nahant Marsh participated in the Xstream Flood Cleanup event on June 29. In one day, 80 volunteers collected 188 tires, 51 railroad ties, a bed frame, a propane tank, car parts, and 82 bags of litter!



Photo by J. Malake

Throughout the summer, we also had several groups help with invasive species removal, including AmeriCorps NCCC, St. Ambrose University, the Friends of Nahant Marsh, United Township High School, John Deere, and the Boy Scouts. More volunteers assisted with summer camps, getting their hands dirty with crafts and their boots muddy with hikes!



Photo by K. DeNoyer



Photo by C. Druhl

Nahant Marsh would like to give a special shout out to **Kent Turner**, who is a Friends member and loyal volunteer. This year, Kent has assisted with sandbagging, resource management, participating in cleanups, flood recovery, and building a new animal enclosure for the Education Center. Thank you for everything that you do for us!



Photos by C. Druhl



If you would like to learn more about volunteer opportunities that will be available at the marsh this year, contact Cassie at [cdruhl@eicc.edu](mailto:cdruhl@eicc.edu).



## AMERICORPS NCCC TEAMS AT NAHANT

by Kinsey Nielsen, *Natural Resource Manager*

Nahant Marsh has hosted four AmeriCorps NCCC teams in 2019 so far. The teams helped assist the marsh staff with projects anywhere from 1-3 days each time. Many of the projects they completed include: cleaning out and organizing the Carp Lake garage to prepare for flooding, pouring a cement footing to support the Carp Lake house foundation, sealing benches, trash cleanup on the preserve, and removing willow trees from the main marsh. The teams have a chance to learn about the marsh's history and importance to the area while they are working on their projects. We greatly appreciate all of their help!

Photos by K. Nielsen



Cleaning out the Carp Lake garage- February 28, 2019



Preparing the area to pour a cement footing- July 9, 2019



Maple 2 Team- February 28, 2019



Team Leader Training- July 2019



Willow removal- August 7, 2019

## REMEMBERING A FRIEND

A long-time Friend of Nahant Marsh, Shirley Hortsman, passed away on August 9, 2019. Shirley had been a dedicated volunteer here since 2008. She especially cared about our captive turtles and snakes. Every other week, Shirley would bring the turtles her special turtle pudding and give us updates about critters that she tended to at home. Our staff always enjoyed the time she spent with us. She will be missed.





## QUIRKY CAMPS AT NAHANT

by Kelsi DeNoyer, *AmeriCorps Naturalist*



When most people think of summer camps, they think of pools, campfires, and crafts. At a place as unique as Nahant Marsh, though, things can be a bit unconventional. Throughout the course of three months and nine different camps, the marsh had around 150 kids partaking in some...different activities. Painting with coffee, climbing in caves, and eating frog legs are just a couple out-of-the-ordinary activities that were going on all summer at the marsh. Fairy gardens, shelter building, and catching crawdads were also some big hits! We can't wait for next summer to do even more atypical activities.



Photos by K. DoNoyer

## EAGLE SCOUT PROJECT

By Cassie Druhl, *Administrative Assistant/Volunteer Coordinator*

Connor Russell is an Eagle Scout with Troop 103. For his Eagle Scout project, he chose to build a bird feeder structure in front of the Education Center. He coordinated a group of volunteers to help him harvest willows from the marsh, remove the branches, and weave them together. We can now hang several bird feeders from the structure. Connor also designed signs for the windows looking out to the structure that highlight the most common birds we see at the feeders. Thank you, Connor, for creating a fun display for all of our visitors to enjoy!

Photos by C. Druhl





## FALL'S SHINING FLOWER

by Kelsi DeNoyer, *AmeriCorps Educator*



Fall is a beautiful time here at Nahant Marsh; the leaves begin to change colors, beautiful birds begin to migrate, and the last of the summer wildflowers persevere. One of these stunning flowers is the rosinweed. From afar, the rosinweed closely resembles a sunflower, but is actually part of the aster family. This plant is native to Iowa and commonly found in prairies, open woods, and rocky upland forests. Rosinweed, or *Silphium integrifolium*, grows to about 3 to 5 feet tall with smooth, opposite leaves along the stem and a 2 to 3 inch flower span. While we can appreciate its beauty and brightness, long-tongued bees appreciate its pollen and nectar. So, next time you're looking out on the marsh on a fall day, be sure to look for the shining rosinweed flower.



Photos by K. DeNoyer



Photo by J. Malake



nahantmarshiowa



nahantmarsh



nahant\_marsh



nahant\_marsh

---

## UPCOMING FAMILY & YOUTH PROGRAMS

### Youth Programs

#### TODDLER TALES

A great way to introduce young children, ages 3-5 years old, to the wonders of the outdoors! The second Tuesday of each month from April-October, Nahant Marsh educators will lead a nature-themed story, craft, and outdoor adventure. Programs are held on the second Tuesday of the month from either 10-11 a.m. or 2-3 p.m.

**October 8: The Need for Seeds**

**10-11 a.m. or 2-3 p.m.**

Cost: \$3 Members / \$5 Guests. No fee for adults accompanying children.

#### HOME SCHOOL PROGRAMS 2019-2020

Nahant Marsh Education Center provides a monthly program specifically geared towards homeschool children. Each session is held the last Friday of the month (except for Holidays). The purpose of the programs is to provide homeschool students with the opportunity to learn and explore nature. Students will be able to examine the value of nature, effects of humans on nature, and how to conserve nature.

Our homeschool program runs during the months of a typical school year from September – May and is geared towards grades K-8th. Each month presents a different topic and grades are separated and presented at appropriate levels. Depending on the subject matter, lessons will include PowerPoint, outdoor exploration, and engaging in hands-on activities.

**October 25, November 22, December 27, and January 31, February 28, March 27, April 24, and May 29 from 2:30-4 p.m.**

Cost: \$8 per session or \$64 for the year for guests

### Family Programs

#### FALL SCAVENGER HUNT

Discover all of the ways fall makes an appearance at Nahant Marsh by going on a scavenger hunt along the trails. Look for changing leaves, little critters, and more!

**October 12 from 10-11 a.m.**

Cost: \$3 Members / \$6 Guests. No fee for adults accompanying children.

#### NATIVE AMERICANS

Learn about who Native Americans are, their practices, traditions, and games they played throughout history.

**November 9 from 10-11 a.m.**

Cost: \$3 Members / \$6 Guests. No fee for adults accompanying children.

#### OWL PELLETS

Take a closer, more intimate look into what owls eat, how they digest it, and how their pellets can tell us more about the species!

**December 14 from 10-11 a.m.**

Cost: \$3 Members / \$6 Guests. No fee for adults accompanying children.

**Pre-registration for programs is strongly recommended, either online at [www.nahantmarsh.org](http://www.nahantmarsh.org) or by phone at 563.336.3370.**

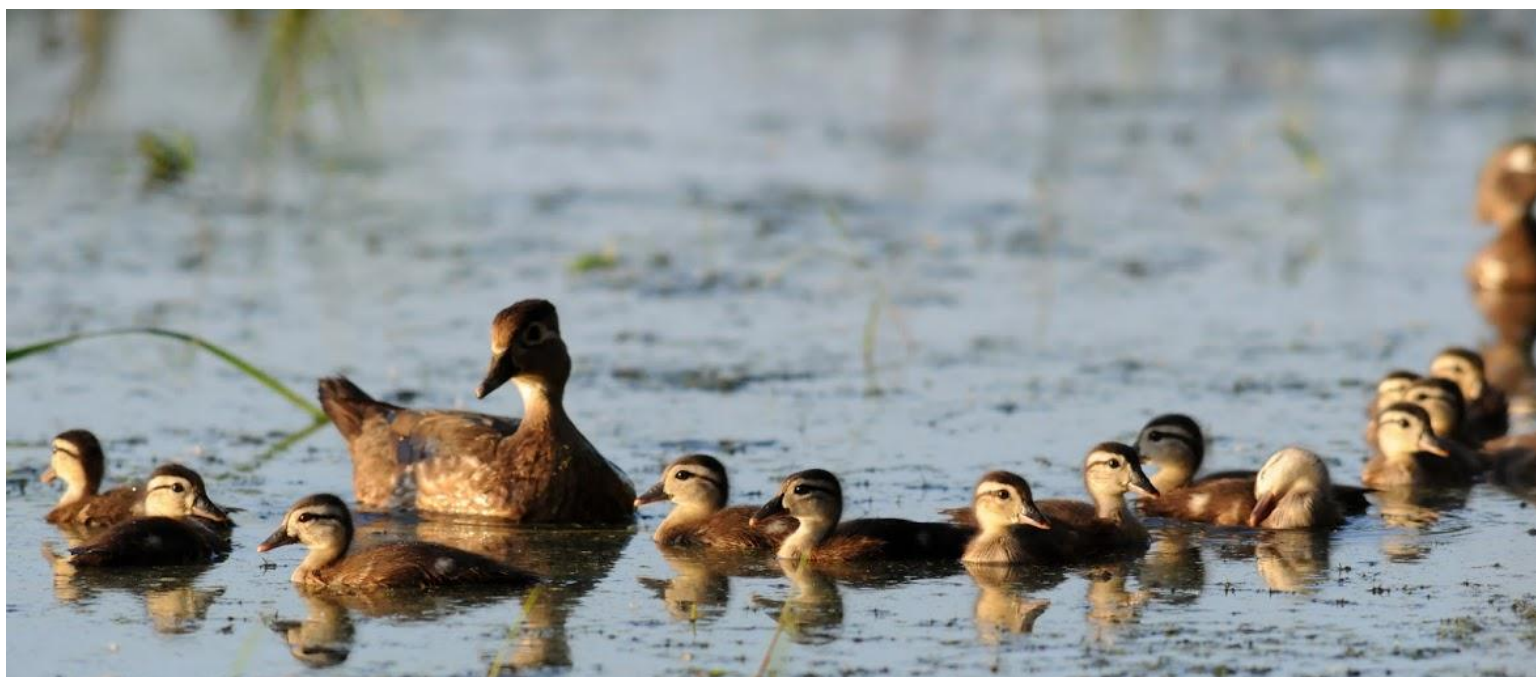


Photo by J. Malake



## Adult Programs

### BREAKFAST NATURE CLUB

Learn the secrets of Iowa's wildlife during this monthly class at Nahant Marsh. A continental breakfast is included in the fee. Feel free to bring your own coffee mug or travel container. Programs are held on the first Friday of the month from 8-9 a.m.

**October 4: Conservation and Hunting in the U.S.**

**November 1: Waterfowl Migration**

**December 6: Sustainable Alternatives**

Cost: \$5 Members / \$10 Guests

### BIRDING TOURS

Learn how to identify birds and their habitats with expert ornithologist Kelly McKay. Kelly will lead tours to various areas of Nahant Marsh. Participants will learn how to identify birds by sight and call and will learn how to properly use the viewing equipment. The tours will continue into fall and you may register for all or one tour.

**October 19, November 2, November 23, and November 30 from 6:30-9 a.m.**

Cost: \$5 Member / \$10 Guest per tour

\$5 Member / \$100 Guest for all



Photo by J. Malake

**Pre-registration for programs is strongly recommended, either online at [www.nahantmarsh.org](http://www.nahantmarsh.org) or by phone at 563.336.3370.**

## UPCOMING ADULT PROGRAMS



Adult Programs (continued)

Photo by J. Malake

### FRIENDS OF NAHANT MARSH MEETINGS

On the last Wednesday of the month, our Friends group meets to discuss volunteer needs at the marsh and get the latest updates from staff. Come to a meeting to see if you would like to join the Friends in their efforts!

**October 30, and November 27 from 6-7 p.m.**

Cost: Free to attend first meeting, annual fee of \$15 required with Friends membership



### Programs for All Ages

#### SATURDAY GUIDED HIKES

Join a naturalist for a guided hike along the trails at the marsh. Hikes are offered on the first Saturday of the month and give visitors an opportunity to experience the environmental changes as the plants and wildlife adapt to the seasons. Whether you are a regular visitor or first-timer, there is always something to learn and experience at the marsh.

**October 5 from 9-10 a.m.**

**November 2 from 9-10 a.m.**

**December 7 from 9-10 a.m.**

**There will not be a hike in January. Come see us at Bald Eagle Days instead!**

Cost: \$5 suggested donation



## MONARCH RELEASE PARTY



Photo by A. Loving

Thank you to everyone who attended the 4th annual Monarch Release Party on September 14! We had great weather and an even better crowd!



Photo by J. Malake



Photo by K. DeNoyer

## UNITED WAY DAY OF CARING

Fifty-one volunteers participated in the United Way Day of Caring at Nahant Marsh. They cleared willows and brush from trails and helped disassemble the garage at our Carp Lake property. Thank you volunteers!



Photos by C. Druhl



## MEET ALLISON!



Hello, my name is Allison. I am the newest AmeriCorps Naturalist/ Environmental Educator at Nahant Marsh. I went to the University of Northern Iowa and studied physical education. In 2018, I decided to return to school and started taking conservation classes through Scott Community College. All of these classes were held at Nahant Marsh. I fell in love with this area and the work the team does here. In my spare time I enjoy kayaking, hiking, fishing and exploring the outdoors any way I can. I am excited to learn more about the marsh and all of the plants and critters that make this beautiful place their home, as well as teaching all ages of people about outdoors and conservation.



Photo by A. Loving



## WITH APPRECIATION

### 2019 BIRDIES FOR CHARITY DONATIONS

Mark Bawden	Linwood Mining and Minerals Corp
Barbara Biggs	Sharon Dembicki
Naomi DeWinter	Jack Herring
Candace Egger	Hubbell-Waterman Foundation
Linda Goff	Mark Slater
Pat Halverson	Jolinda Burr
John Jurich	Timothy Murphy
Curtis Lundy	Lori Ralfs
Julie Malake	Cathy and Joe White
John McEvoy Jr.	Kathy and Paul Brown
Barbara Palen	William Burress
Susan Schwartz	Terry Collins
Mary Ann Stoffel	Laurel Davis
Pat Tandy	Lynne Groskurth
Sue and Bob Thorensen	Margaret Iglehart
Brian Tugana	Laurie Inghram
Gretchen Waters	Kathleen Logan
Cal Werner	Helen Macalister
Spin and Mindy Williams	Jerry and Julie Skalak
Tom and Susan Leabhart	Joe Stewart
Jerome Bald	Scott and Beth Tinsman
Brian Ritter	Patrick Walton
James Meehan	Jonathan and Sarah Wilmschurst
Kathy Morris	
Ken and Linda Beck	

### FALL'19 DONATIONS

Quad Cities Community Foundation  
 Sherry Staub  
 Lynn Abel  
 Michael Ryan  
 Zach Strong  
 Jimmy Wiebler  
 Martin Equipment INC  
 Grow Quad Cities Fund-Iowa  
 Steve Gustafson  
 Kory Darnall  
 Moline Conservation Club  
 Green State Credit Union  
 WVIK  
 Waste Commission of Scott County  
 Sunbelt Rentals

### FALL'19 ANIMAL "ADOPTIONS"

Pat Leskanich, Kimberly Delveau, Jayden, Aliya, and Michael (Grammy Camp) "adopted" Buddy  
 Laurie and Lydia Rohner "re-adopted" Leia

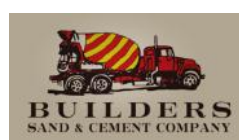
### FALL'19 MEMBERSHIPS

Rich Wilker  
 Art Jackson  
 Robert Loch  
 Gail Rinkenberger  
 Betsy Huston  
 Patrick Wendt  
 Ralph Heninger  
 Victoria Sisco



Photo by J. Malake

### CORPORATE SPONSORS



### PARTNERS



United Way of the Quad Cities Area



---

## KIDS CORNER: SILLY LEAF MONSTERS

by Signey Hilby, former *AmeriCorps Naturalist*



### Materials Needed:

Real Leaves – Gathered from Your Yard  
Brightly Colored Paints  
Paint Brushes  
Silly Face Stickers or Colorful Permanent Markers

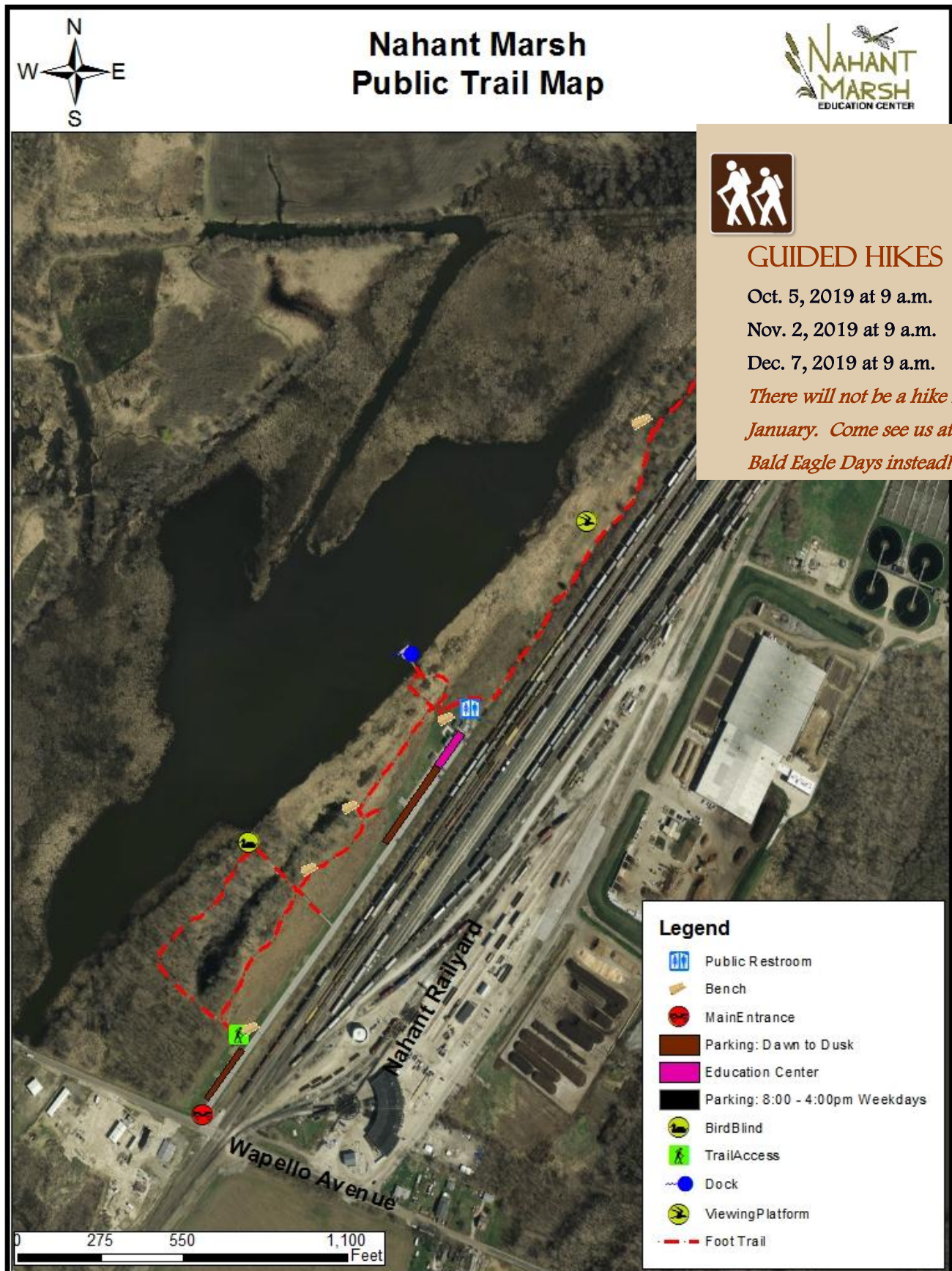
### Steps:

1. Gather leaves from your own backyard or local park.
2. When choosing leaves, try to find a variety of types, shapes, and sizes.
3. Paint the leaves until they are completely covered.
4. Peel and stick the silly face stickers onto the leaves or draw silly faces using colorful permanent markers.





# MAP YOUR ADVENTURE





# EDUCATION CENTER HOURS

**Monday–Friday from 8:30 a.m. to 4:30 p.m. and Saturdays from 9 a.m. to noon (extended to 3 p.m. April–October)**

*There is no fee to visit the Education Center, but donations are always appreciated.*

# PRESERVE HOURS

**Open Daily from Sunrise to Sunset**

If the main gate is locked, trails are accessible from the front parking lot. Look for the opening in the fence near the kiosk.



# GETTING TO NAHANT MARSH

**Nahant Marsh  
4220 Wapello Ave.  
Davenport, IA 52802**

*From Davenport, Iowa—Take Highway 22 south (Rockingham Road), turning left on Wapello Avenue (the last turn before the I-280 overpass).*

*From Rock Island, Illinois—Take I-280 into Iowa to the Highway 22/Rockingham Road exit. Turn right onto Highway 22, and then right onto Wapello Avenue.*

**Follow Wapello Avenue toward the river.  
Nahant Marsh will be on the left just before the railroad crossing.**