

Nahant News

SPRING 2019

Volume 13, Issue 2



4220 Wapello Ave. • Davenport, IA 52802
www.nahantmarsh.org • 563.336.3370

Photo by J. Malake



ABOUT NAHANT MARSH

Nahant Marsh
4220 Wapello Avenue
Davenport, IA 52802

563.336.3370
nahantmarsh@eicc.edu

www.nahantmarsh.org

STAFF DIRECTORY

BRIAN RITTER

Executive Director
britter@eicc.edu • 563.336.3372

AMY LOVING

Eco-Education Coordinator
aloving@eicc.edu • 563.336.3373

LINDSEY KENNEDY

Development Officer
lmkenney@eicc.edu • 563.336.3374



CASSIE DRUHL

Administrative Assistant/Volunteer
Coordinator
Partners of Scott County Watersheds
Coordinator
cdruhl@eicc.edu • 563.336.3378



KINSEY NIELSEN

Part-Time AmeriCorps Educator
Part-Time Natural Resources Manager
ksnielsen@eicc.edu • 563.336.3375



SIGNEY HILBY

Full-Time AmeriCorps Educator
shilby@eicc.edu • 563.336.3370



JIMMY WIEBLER

Full-Time AmeriCorps Educator
jwiebler@eicc.edu • 563.336.3370

SAMMI BOYD

Natural Resources and Education Intern

KORY DARNALL

Natural Resources Technician II

ZACH STRONG

Natural Resources Technician II

MADELINE KULL

Natural Resources Technician I



SPRING CLEANUP

April 27 from 9-11:30 a.m.

Volunteer to help with spring cleanup projects around the nature preserve. Groups are welcome and encouraged to call ahead. Projects include hauling brush, pulling garlic mustard, and picking up trash along the river roadways.

Gloves, bags, tongs, and refreshments will be provided. Bring your own reusable water bottle. Register at 563-336-3370 or nahantmarsh.org/events.



Nahant Marsh preserve is one of the largest urban wetlands on the Upper Mississippi River. It is comprised of marshy areas, mesic, wet and sand prairie, and bottomland forest. A spring-fed quarry, known as Carp Lake, and the surrounding grounds are part of the Nahant Marsh preserve as well. The 305-acre preserve is owned by the City of Davenport and the Nahant Marsh Board, a 501(c)(3) nonprofit organization. Conservation and restoration efforts on the preserve are directed by the Nahant Board. The educational programming is overseen by Eastern Iowa Community Colleges (EICC). EICC's Advanced Technology Environmental Education Center (ATEEC) is also a critical part of Nahant Marsh.



NAHANT MARSH'S FIRST ANNUAL OBERHOLTZER AWARDS

by Brian Ritter, *Executive Director*



On February 23, Nahant Marsh held the first Oberholtzer Awards event to begin recognizing local people who have dedicated their lives (or will dedicate their lives) to protecting our natural world. Oftentimes these people go unnoticed or have been largely forgotten for their contributions. The awards are a way to recognize their hard work and leadership, to bring awareness to the causes they believe in, and most importantly, to inspire others to take action.

These awards were named in honor of Ernest J. Oberholtzer, a Davenport native who spent his life exploring, documenting, and working tirelessly to protect wild places, especially the vast wilderness of the Boundary Waters in Northern Minnesota and Southern Canada. Oberholtzer (along with another famous, Iowa-born conservationist, Aldo Leopold) was a founding member of the Wilderness Society. We found it fitting to honor Ernest Oberholtzer with the first annual Oberholtzer Award for Past Conservation Leadership. Mary Swalla Holmes from the Ernest Oberholtzer Foundation (pictured below) accepted the award on his behalf.



Brian Ritter presenting Ernest Oberholtzer's award to Mary Swalla Holmes. Photo by J. Malake.

The award for Present Conservation Leadership went to Curtis Lundy. Although Curtis spent much of his professional career working in the financial industry, he

has spent countless hours of his own time working to build many conservation organizations. He helped to form Xstream Clean-up, Partners of Scott County Watersheds, the Scott County Integrated Roadside Vegetation Management program, and other local environmental efforts. He served for many years on the boards of Living Lands and Waters and Nahant Marsh and has been instrumental in helping to push them to the next level. He spends his time between the Quad Cities Area and working to restore his 130-acre property in northeast Iowa.

Joe McGovern, President of Iowa Natural Heritage Foundation, relayed this story of Curtis: "When Iowa Natural Heritage Foundation bought 130 acres of beautiful land in Allamakee County in 2005, our goal was to see it permanently protected to safeguard the half mile of Hickory Creek trout stream and quarter-mile portion of Yellow River that flow through the property. When Curtis Lundy called, we had no idea how good of a land steward we'd found. By buying the land and signing the perpetual conservation easement in 2006, Curtis protected this special place. Since then, he has invested countless hours restoring the woodlands, prairies, wetlands, and stream habitats on his land. INHF could not be happier with Curtis' land stewardship."

Julie Malake, from the Friends of Nahant Marsh, had this to say about him: "I have known Curtis since I first began visiting Nahant Marsh in 2006, and have found him to be a tireless force in stewardship for our planet, influencing people to protect and restore our Wild Places and Things." And, I think Chad Pregracke said it best: "The dude is AWESOME. If fourteen years of service doesn't say enough, I don't know what will. Let me just give you a few words:

selfless, witty, intelligent, adventurous, forward thinking and badass!! Thanks, Curtis, for all you do!"



Curtis Lundy with his Oberholtzer Award. Photo by J. Malake.

(continued on page 4)

OBERHOLTZER AWARDS (CONTINUED)

It's just as important to recognize and encourage those young people who are passionate about pursuing a



career in conservation. Conservation is often an uphill battle and sometimes a thankless job. But more than ever, we need talented people to pursue careers in science and conservation.

Aislinn Geedey is one of those people. Aislinn was this year's recipient for Future Conservation Leadership. She is a senior at Rock Island High School. In addition to spending time at Augustana's Green Wing Environmental Lab and participating in the U.S. Fish and Wildlife

Aislinn Geedey with her Oberholtzer Award. Photo by J. Malake.

Service's Mussel Round-up, Aislinn has been heavily involved in the Environmental Action Club at Rock Island High School. She also volunteers at many QCCA events, Xstream clean-up events, Nahant Marsh, and the QCCA wetland. She has been a member of Girl Scouts for nine years.

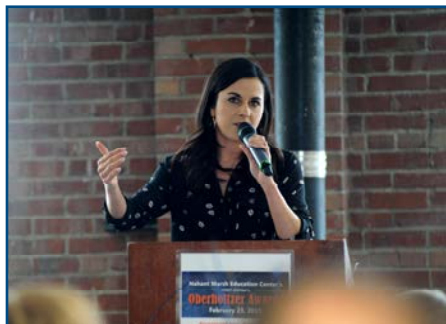
Nominee, Stephanie Fuhr, said of Aislinn: "I cannot

imagine a life where she will not be contributing to conservation on planet Earth. She is all in!"

Aislinn plans to attend Luther College in Decorah, Iowa in the fall to major in Biology and English. She aspires to be an advocate for science literacy and conservation, hoping that her writing can help others understand the workings of nature and appreciate the environmental issues the world faces today. As part of this year's awards, we were able to offer a \$2,000 scholarship to Aislinn.

The awards were made possible by the generosity and hard work of many local businesses, families, and individuals. We honored our premiere sponsor as well, the Joyce and Tony Singh Family Foundation, with an award. Our other main sponsors for this event include Bitco Insurance, Walcott Trust and Savings Bank, Miller Trucking and Excavating, the Quad City Audubon Society, the Quad Cities Conservation Alliance, the Sierra Club Eagle View Group, WVIK, Iowa Public Radio, Iowa Public Television, iLive Here QC, Thrivent Financial, Living Lands and Waters, and the Henry County Soil and Water Conservation District. Our staff, especially Lindsey Kennedy and intern Abigail Kull, were able to make the event a success.

We look forward to the February 2020 awards, and will begin seeking nominations for past, present, and future honorees soon.



THE JOYCE & TONY
SINGH FAMILY
FOUNDATION



Top left: Aleeza Singh. Top right: Chad Pregracke visiting with attendees. Bottom left: Brian Ritter addressing the crowd. Bottom right: Keynote speaker, Charity Nebbe. Photos by J. Malake.

SIGNS OF WILDLIFE AT NAHANT MARSH

by Kinsey Nielsen, *AmeriCorps Naturalist and Natural Resource Manager*



Nahant Marsh is teeming with life— hundreds of plants and animals call the nature preserve home. It can be difficult to encounter certain species due to the weather, season, and the time of day they are most active. Natural resource staff members periodically use trail cameras to capture photos of wildlife living in the area. Other ways to determine what creatures are nearby include animal tracks, scat, fur/feathers, shed antlers, and chewing/scraping of trees. All of the snow in 2019 has allowed us to identify many animal tracks. Stop by the marsh and discover signs of wildlife for yourself! Some of the most recent track sightings are:



River otter



Raccoon

Beaver



Squirrel



White-tailed deer



Coyote

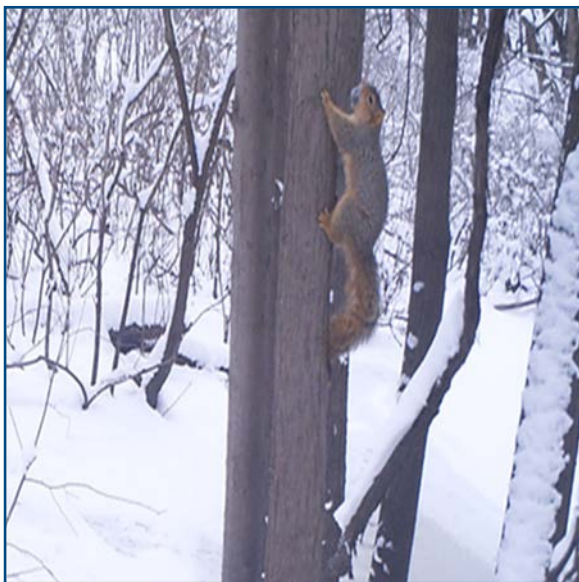
Virginia opossum



Eastern cottontail



White-tailed deer posing for the trail camera. 12/10/2018



Fox squirrel climbing a tree. 1/14/2019



Otter tracks in the snow. 2/5/2019



NATIONAL VOLUNTEER WEEK



United Way Day of Caring 2018. Photo by J. Malake.

National Volunteer Week is April 7-13, 2019. It was established in 1974 by the Points of Light organization, founded by President George H.W. Bush, to recognize the impact that volunteer service has on a community. To celebrate, Nahant Marsh would like to thank its dedicated volunteers for the hundreds of hours of service devoted every year! There are several programs, cleanups, and events that would not be possible without your efforts. If you would like to learn more about volunteer opportunities that will be available at the marsh this year, contact Cassie at cdruhl@eicc.edu.

THANK YOU VOLUNTEERS!

JOIN OUR FRIENDS GROUP!

by Jolinda Burr, *President-Friends of Nahant Marsh*

Before I attended my first Friends meeting five years ago I didn't really know much about it. I had just recently become involved at Nahant and it was suggested I join. I was intrigued, came to one meeting, and I was hooked. It didn't take me long to see that this is an extremely dedicated and enthusiastic group that helps with whatever needs to be done at Nahant.

But what do we do? You will find us planting shrubs and oak trees, cutting out invasive willows, building pavilions and viewing platforms, removing trash, helping at events, and even scooping turtle poop out of their enclosure. The list goes on.

I invite you to join our group and see the difference you can make. All we ask is a passion for conservation and a willingness to make new Friends.

MEET CASSIE!

Cassie Druhl is the new Administrative Assistant/Volunteer Coordinator at Nahant Marsh, as well as the Coordinator of Partners of Scott County Watersheds. She received her bachelor's degree in Communication Studies from Central College and her bachelor's degree in Environmental Studies from Ashford University. Cassie has worked for many educational organizations, including the Wapsi River Environmental Education Center, Ashford University, and Junior Achievement of the Heartland. Outside of work, Cassie enjoys running, biking, kayaking, hiking, and going to as many concerts as she can!



FEATURED ANIMAL: AMERICAN WOODCOCK

by Jimmy Wiebler, *AmeriCorps Naturalist*



On warm spring evenings—just about dusk—the male American woodcock emerges from his thick cover within the woods and into an open field. Here, he will carry out an elaborate dance to attract his mate. The ritual begins with a single call note, a buzzy *peent*, followed by an acrobatic flight high into the air. If you happen to stumble upon such a show, listen closely to hear his musical chirpings and the twittering sounds of air moving through his wings while he performs in the sky.

The American woodcock (also known as the timberdoodle) is a member of the sandpiper family, Scolopacidae. Although this species resembles other sandpipers and snipes in this family, its habitat and behavior are far from what you would expect of other shorebirds. Woodcocks are nocturnal and prefer damp, brushy areas within new-growth forests. At night, these robin-sized birds forage for earthworms and other invertebrates in the ground by probing the soil with their relatively long bill, which measures about three inches in length. They are well adapted to detect and catch their prey because the tip of their bill is full of sensory receptors and is somewhat hinged, allowing the end to open up like a pair of forceps while fully submerged in the soil. The woodcock's anatomy is very peculiar. Their eyes are positioned on top of their head, which aids in the detection of oncoming predators such as foxes. As these birds evolved this adaptation, their brains were rearranged in such a way that their cerebellum, the part of the brain responsible for balance and muscle coordination, was shifted from the rear of the skull to the



Photo source: www.allaboutbirds.org

bottom. Additionally, their ears are located at the front of their face, between their eyes and the base of the bill.

Woodcocks are found throughout Iowa during the summer, but their numbers have been declining throughout most of their range, which extends from eastern Canada in the summer to southeastern states such as Florida in the winter. Although they are hunted for their meat, hunting has little impact on populations. Among other factors, habitat loss and degradation appear to be largely responsible for their decline. Organizations such as the American Woodcock Society (a sister of the Ruffed Grouse Society) aim to restore healthy habitat for the woodcock and other wildlife.

Resources: ruffedgrousesociety.org; Sargent, M.S and Carter, K.S., ed. 1999. Managing Michigan Wildlife: A Landowners Guide. Michigan United Conservation Clubs, East Lansing, MI. 297pp.

SUMMER RESEARCH OPPORTUNITY



Nahant is now taking applications for summer research interns! Research is an integral part of the work we do to preserve and maintain the amazing natural areas that we have at Nahant.

Nahant's research interns are funded through the Louis Stokes Alliances for Minority Participation (LSAMP). We have had many different projects in the past including turtle monitoring, goat grazing studies, mushroom surveys, wildlife monitoring, and various water quality projects. Students will be responsible for designing their project, carrying out the research, and making a poster of their results.

The deadline to apply is May 3rd! Any student is allowed to participate, but there is compensation available for students that meet the qualifications of the LSAMP grant. For more information, please contact Jimmy Wiebler at jwiebler@eicc.edu or visit our website at www.nahantmarsh.org/whatwedo/research.



Blanding's turtle.

PLANT PROFILE: SPRING PLANTS

by Sammi Boyd, *Natural Resources and Education Graduate Assistant*

With the warming of spring comes new plant life. At Nahant Marsh, you can find trees greening up, early blooming flowers, and the reawakening of the prairies. Some of the earliest flowers are Canada anemone (*Anemone canadensis*) and spiderwort (*Tradescantia virginiana*).

Canada anemone is a short woodland plant in the buttercup family. Canada anemone produces white flowers on a thin stalk starting in early May. Canada anemone can form a blanket across the forest floor, dotted with white flowers.

Spiderwort can grow up to three feet tall. Spiderwort produces three-petaled violet flowers with yellow stamens on top of long, grass-like leaves. Each bloom lasts for only a day. It is named Spiderwort because when the stem is cut, the liquid inside hardens into a thread, much like a spider's web.



Canada anemone



Spiderwort



Sensitive fern

Another spring plant found at Nahant Marsh is the sensitive fern (*Onoclea sensibilis*). It requires shady areas and wet soil, so it is often found in marshy and swampy habitats. The sensitive fern does not produce flowers, rather it reproduces by spores. It has long, deeply pinnately-lobed fronds. The upper lobes point ahead, the middle lobes point outward, and the lower lobes point downward.

follow us
ON SOCIAL MEDIA



nahantmarshiowa



nahantmarsh



nahant_marsh



nahant_marsh



Photo by J. Malake.

SUMMER CAMPS AT NAHANT MARSH

Summer camps are offered for youth ages 3 -14 from mid-June to the end of July. Campers must register by calling Eastern Iowa Community Colleges at 1 - 888 - 336 - 3907 or register online at eicc.edu/summercamp.



THE
Community's
College

NATURE ART CAMP FOR AGES 8-10 | COST: \$45

Connecting nature, art, and doing your part to protect the earth. Campers will create various art projects from natural and recycled materials. Some projects include botanical dyes, crafting with willows, and upcycled wind chimes. Most projects are take-home. Snacks will be provided. Please bring a sack lunch.

June 12, 9 a.m.-3 p.m.

NATURE ART CAMP FOR AGES 11-14 | COST: \$45

Connecting nature, art, and doing your part to protect the earth. Geared toward older youth, in this camp, we will create various art projects from natural and recycled materials. Some projects include wreath making, magazine bead bracelets or necklaces, and plant presses. Most projects are take-home. Snacks will be provided. Please bring a sack lunch.

June 13, 9 a.m.-3 p.m.

TOADSTOOLS CAMP FOR AGES 3-4 | COST: \$20

Hop on over to Nahant Marsh for a morning of nature exploring. Campers will meet live creatures and explore their wondrous world through hands-on activities followed by an animal-themed snack. Youth must be accompanied by an adult.

June 19, 9 a.m.-11 a.m. –OR– July 17, 9 a.m.-11 a.m.

CRITTER CAMP FOR AGES 5-6 | COST: \$20

Connect your child with nature as they learn about insects, reptiles, and other critters. Children will be fully engaged with activities such as live animal encounters and outdoor exploration.

June 19, 1 p.m.-4 p.m. –OR– July 17, 1 p.m.-4 p.m.

MARSH EXPLORER CAMP FOR AGES 7-10 | COST: \$45

Campers will be running amuck while exploring the marsh and the creatures that live in and around the water. Be sure to bring your rubber boots! Snacks will be provided. Please bring a sack lunch.

June 20, 9 a.m.-3 p.m. –OR– July 18, 9 a.m.-3 p.m.

NATURE ADVENTURE CAMP FOR AGES 7-10 | COST: \$200

Explore wetlands, woodlands, and prairies with the naturalists at Nahant Marsh. Campers will get hands-on experience learning about wildlife and practicing outdoor skills. This five-day camp offers youth an opportunity to create memories and dig in to nature. Snacks will be provided. Please bring a sack lunch.

June 24-28, 9 a.m.-3 p.m.

WILDERNESS SKILLS CAMP FOR AGES 11-14 | COST: \$90

In this two-day camp, youth will explore the outdoors while learning practical survival skills. Activities will include fire building, shelter building, and navigation skills. Snacks will be provided. Please bring a sack lunch.

July 10-11, 9 a.m.-3 p.m.

GETTING BUGGY WITH IT FOR AGES 7-12 | COST: \$90

Two-day summer day camp focusing on butterflies, dragonflies, native bees, aquatic insects, and more. Through a variety of hands-on, interactive field activities, this camp will teach kids how amazing insects are. Campers will gain skills in the field and lab settings and will learn about insect conservation and the vital relationship between humans and insects. Snacks will be provided. Please bring a sack lunch.

July 31-August 1, 9 a.m.-3 p.m.



Bug Campers! Photo by Kinsey Nielsen.

UPCOMING FAMILY & YOUTH PROGRAMS

Youth Programs

HOMESCHOOL

Nahant Marsh Education Center provides a monthly program specifically geared towards homeschooled children, grades K-9. Each program includes a lesson, hands-on activity, and outdoor exploration and is held on the last Friday of the month from 2:30-4 p.m.

March 29: Weather— Tornadoes, Hailstorms, & Blizzards— Oh My!

April 26: Snake Studies

May 31: Turtle Studies

Cost: \$6 Members / \$8 Guests

TODDLER TALES

A great way to introduce young children, ages 3-5 years old, to the wonders of the outdoors! The second Tuesday of each month from April-October, Nahant Marsh educators will lead a nature-themed story, craft, and outdoor adventure. Programs are held on the second Tuesday of the month from either 10-11 a.m. or 2-3 p.m.

April 8: April Showers

May 14: Reptiles and Amphibians

June 11: Wiggly Worms

July 9: Hooked on Fishing

August 13: Sensing Nature

Cost: \$3 Members / \$5 Guests

No fee for adults accompanying children.

Family Programs

BIRDS

Explore the trails in search of birds on the water, in the prairie, and up on branches. Participants will make something to take home for the birds.

May 11 from 10-11 a.m.

Cost: \$3 Members / \$6 Guests. No fee for adults accompanying children.

SCAVENGER HUNT

Learn about the animals that live at the marsh while searching along the trails for hidden clues.

June 8 from 10-11 a.m.

Cost: \$3 Members / \$6 Guests. No fee for adults accompanying children.

POND STUDY

Discover the fascinating creatures that live in the marsh. Using dip nets, we will catch ghost shrimp, dragonfly nymphs, water boatman, and more!

July 13 from 10-11 a.m.

Cost: \$3 Members / \$6 Guests. No fee for adults accompanying children.



Celebrate spring at Nahant Marsh with our yearly event for ages 3-12! At their leisure between 9-11 a.m., children can participate in either a Hide-and-Seek Egg Hunt (great for younger children) or a GPS Scavenger Egg Hunt (best for older children). Bring your own basket!



There will also be a variety of nature-themed hands-on

2018 event. Photo by J. Malake.

activities where children and their families will learn about local wildlife, including displays by Crandall Farms, Inc. on bees and Delta Waterfowl on migrating waterfowl.

Refreshments will be available for purchase. This is a fundraising event and all proceeds go to support environmental education and natural resource projects.

April 13 from 9:00 a.m.-12:00 p.m.

Cost: \$5 Members / \$7 Guests / Children 2 and under are free. No fee for adults accompanying children.



Pre-registration for programs is strongly recommended, either online at www.nahantmarsh.org or by phone at 563.336.3370.

Adult Programs

BREAKFAST NATURE CLUB

Learn the secrets of Iowa's wildlife during this monthly class at Nahant Marsh. A continental breakfast is included in the fee. Feel free to bring your own coffee mug or travel container. Programs are held on the first Friday of the month from 8-9 a.m.

April 6: Student Research at Nahant

May 3: Turtles of Iowa

June 7: TBD

July 5: TBD

August 2: TBD

Cost: \$5 Members / \$10 Guests

FORAGING FOR WILD GREENS

Foraging is a great way to participate in the seasonal changes of the natural world. This hands-on class is designed to give participants firsthand experience and knowledge to identify, harvest and prepare spring greens, herbs, and flowers. Many of the plants covered in the class are ones that can be found in your backyard.

May 1 from 5-7 pm

Cost: \$10 Members / \$20 Guests

WILDFLOWER WALKS

In this series, participants will learn basic techniques on how to identify wildflowers. We will explore various prairie sites at Nahant Marsh through the growing season. This is a field-based class, so please come dressed for the weather. Participants are also encouraged to bring a notebook and/or camera. You may choose to attend all or one class.

May 18, June 8, June 29, July 20, August 3, August 31, and September 21 from 9 -10:30 a.m.

Cost: \$10 per class or \$60 for all sessions

HERB ALL ABOUT IT

During this creative workshop, learn to make a fragrant, decorative, and useful fresh herbal wreath or swag. Fresh herbs include locally grown lavender, sage, and thyme. We will also learn about the many uses of these herbs. All materials will be provided.

July 16 from 2 - 4 p.m.

Cost: \$20 Members / \$25 Guests

MOTH-ERS DAY

Celebrate National Moth Week at Nahant Marsh. The evening will begin with a presentation on moths. Following the presentation, participants will observe how black lighting is used to document and identify moths. There is no fee for this program, but registrations are appreciated. Light snacks and beverages will be provided. The event is held in cooperation with the Scott County Master Gardeners.

July 27, 8 p.m.-midnight

Cost: Free, but donations appreciated

UPCOMING PROGRAMS (continued)

Adult Programs (continued)

INTRODUCTION TO MUSHROOM COLLECTION AND IDENTIFICATION

Although DNA testing is the only way to tell with absolute certainty what mushroom you have found, this class will cover the basics of mushroom identification and collection. Learn the basic characteristics of fungi including cap, gill, and stipe features in addition to how to make a spore print and what to carry with you in the field. Where, when, and how to collect in a sustainable way will also be covered. A portion of the class will be spent outdoors, so dress accordingly and bring a basket and pocketknife.

August 3 from 8:30 a.m.-12 p.m.

Cost: \$25 Members / \$30 Guests

Programs for All Ages

SATURDAY GUIDED HIKES

Join a naturalist for a guided hike along the trails at the marsh. Hikes are offered on the first Saturday of the month and give visitors an opportunity to experience the environmental changes as the plants and wildlife adapt to the seasons. Whether you are a regular visitor or first-timer, there is always something to learn and experience at the marsh.

April 6, May 4, June 1, July 6, and August 3 from 9 - 10 a.m.

Cost: \$5 suggested donation

EARTH DAY AT THE FREIGHT HOUSE FARMERS MARKET

Enjoy hands-on activities, live music, speakers, and demonstrations. Topics will include climate change, recycling, energy, pollution, health, and species protection.

April 20 from 9 a.m.-1 p.m. at the Freight House Farmer's Market (421 River Dr., Davenport, IA)



SPRING CLEANUP

Volunteer to help with spring cleanup projects around the nature preserve. Groups are welcome and encouraged to call ahead. Projects include hauling brush, pulling garlic mustard, and picking up trash along the river roadways. Gloves, bags, tongs, and refreshments will be provided. Volunteers are encouraged to bring a water bottle.

April 27, 9:00-11:30 a.m.

KIDS CORNER: EGG CARTON LADYBUGS!

by Signey Hilby, *AmeriCorps Naturalist*



Materials Needed

- Egg carton
- Scissors
- Paint brush
- Red craft paint
- Black marker
- Black ½ inch pom-poms
- Googly eyes
- Black pipe cleaners
- Hot glue or tacky glue



Instructions

1. Use a scissors to cut individual cups away from the bottom of an egg carton.
2. Paint each cup red and set them aside to dry.
3. Use a black marker to draw a line down the center of each cup and give your ladybug some spots.
4. Use a scissors to cut two pieces of pipe cleaners, about two inches in length, and curl the end under.
5. Use hot glue or tacky glue to attach the pipe cleaner antennae to the egg carton cup.
6. Use hot glue or tacky glue to attach the googly eyes to the pom-pom.
7. Use hot glue or tacky glue to attach the pom-pom to the antenna and egg carton cup.
8. Let the glue set before playing with your ladybugs.



WITH APPRECIATION

2019 DONATIONS

Anonymous
 Linda Baxley
 Cindy Cavanaugh and Michael Fitzgerald
 Quoc Chu
 Jane and Leslie Cox
 James Entwistle and Siv Brit Saetre
 Kevin, Dara, and Aislinn Geedeey
 Amy Groskopf and Kent Turner
 Randy Hervey
 Josh and Kate Hoffman
 Steven and Mary Ellen Hunter
 Jon and Connie Jeschke
 Steve and Julie Klecker
 Tony Knobbe
 Steve and Lora Kull
 Tod Kull
 Kathleen and Andy Lenaghan
 Kathleen Logan
 Curtis Lundy
 Frank and Anne McCarthy
 Joe and Molly McGovern
 Don and Rebecca McLean
 Marion Meginnis
 Mississippi Valley Sportsmen, Inc.
 Will Moon
 Tim Murphy
 Bernie Murphy
 Jim Nelson
 Kevin and Lisa Oetken
 George and Patricia Olson
 Darin and Salem Osland
 Matt and Megan Ostrom
 Michael and Kim Pepping
 Anne Balzer Powers
 Chad Pregracke and Tammy Becker
 Randy and Carol Pribyl
 Lori Ralfs
 Jason, Sarah, and Owen Ritter
 Herb and Deborah Ritter
 David Schramm

Leo Schubert and Susan Sharar
 Rueben Segura
 Aleeza Singh and Kyle Ekberg
 Hugh and Deborah Stafford
 Reid Stamer
 Carole Teator
 Julie Vanpelt
 Bella Walker
 Waste Commission of Scott County
 Ann Werner
 Cal and Jill Werner
 Mark Werning
 Jonathan and Sarah Wilmshurst
 Erika Woods

2019 IN-KIND DONATIONS

Abernathy's
 Active Endeavors
 Altitude Trampoline Park
 Antonella's Ristorante & Pizza
 Baked Beer & Bread Company
 Bayside Bistro
 Beaverdale Books
 Big River Magazine
 Blank Park Zoo
 Blick Art Supply
 Sammi Boyd
 Denise and Carl Bulat
 Jolinda Burr
 Carousel of Delights
 Case Creek Obstacles
 Celebration Belle
 Central Standard
 Chocolate Manor
 Codfish Hollow
 Comedy Sportz
 Cornell Lab of Ornithology
 The Current
 The Diner
 Downtown Deli
 Eastern Iowa Community Colleges
 Ashley Ekrecke
 Elevate Trampoline Park

Ernest Oberholtzer Foundation
 EZ Livin
 Family Museum
 Figge Art Museum
 Film Scene
 Fleet Feet
 Float QC
 Fresh Deli
 Front Street Brewery
 German American Heritage Center & Museum
 Jake Gervase
 Girl Scouts of Eastern Iowa & Western Illinois
 Granite City
 Great River Brewery
 Greater Des Moines Botanical Garden
 Leslie Green
 Amy Groskopf and Kent Turner
 Hartley Studio
 Hawkeye Sports Bar & Grill
 Here's the Scoop
 Hotel Blackhawk
 IMEG
 Iowa Mississippi River Parkway Commission
 Iowa State Fair
 Isabel Bloom
 John Deere Classic
 Amy and Kevin Kay
 Kimberly Pierce Jewelry
 Linwood Mining and Minerals Corporation
 Curtis Lundy
 Julie Malake
 Me & Billy's
 Michael's Fun World
 Molly's Cupcakes
 Natural Grocers
 Necker's Jewelers
 Kinsey and Mitch Nielsen
 George and Patricia Olson
 Our Iowa Magazine

Continued on page 13

WITH APPRECIATION (continued)

Decker Ploehn
 Prairie Light Books
 Prairie Moon Nursery
 Putnam Museum
 QC Family Entertainment
 QC Trail and Ultra Runners
 Quad City Symphony Orchestra
 RAW
 Raygun
 REI
 Brian Ritter
 River Action
 David Sorensen
 Source Bookstore
 Tailgate
 TBK Bank Sports Complex
 Theisen's
 Tour De Brew
 Britt Vickstrom
 Wallace's Garden Center
 Waste Commission of Scott County

Cal and Jill Werner
 Whiterock Conservancy
 Jonathan and Sarah Wilmshurst

2019 ANIMAL "ADOPTIONS"

Theodore Boucher "adopted" Captain
 Ethan and Vivian Farmer "adopted" Micheline
 Bill Loving "adopted" Bob
 Thomas and Curtis Peterson "adopted" Micheline
 Sally Stewart "adopted" Bob and Pancake

2019 MEMBERSHIPS

Sue Albrecht
 Marilyn Bartels
 Anne Basken
 Kristen Bergren
 Bernadene Bowles
 Robert Dcamp
 Pete Devlin
 Tom J. Fritz

Pat Halverson
 Beth Harris
 Judy Hartley
 Randall Hervey
 Jane Hodge
 Mary Johannsen
 Kevin and Amy Kay
 Karen Kelly
 Darlene Norton
 Mark Patton
 David Schramm
 Amanda and Samuel Smysor
 Carey Smysor
 David Sorensen
 Jesell Souhrada
 Tim Thomas
 Britt Vickstrom
 Lori Walljasper
 Didi Wilkins

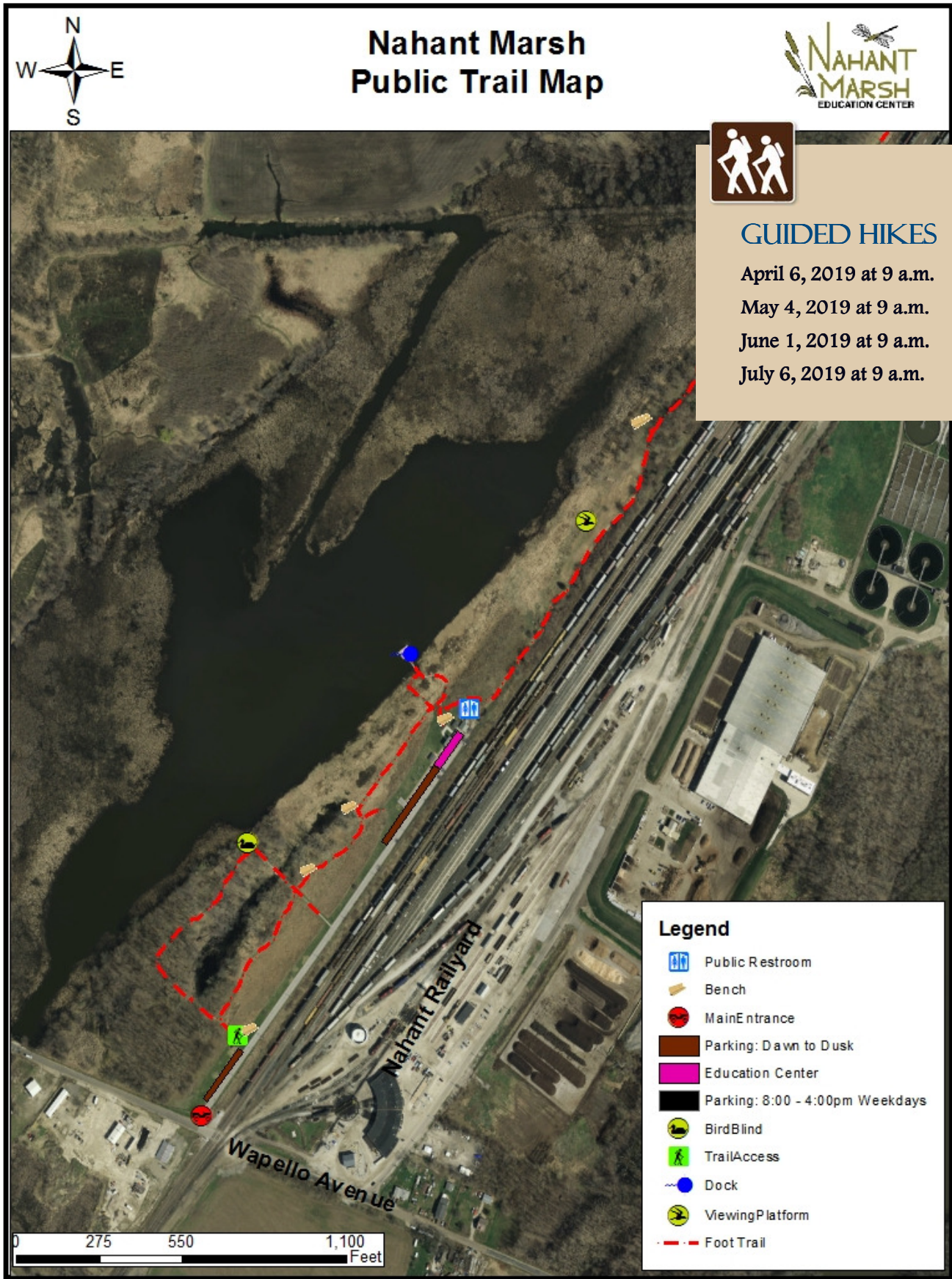
CORPORATE SPONSORS



PARTNERS



MAP YOUR ADVENTURE



EDUCATION CENTER HOURS

Monday–Friday from 8:30 a.m. to 4:30 p.m. and Saturdays from 9 a.m. to noon (extended to 3 p.m. April–October)

There is no fee to visit the Education Center, but donations are always appreciated.

PRESERVE HOURS

Open Daily from Sunrise to Sunset

If the main gate is locked, trails are accessible from the front parking lot. Look for the opening in the fence near the kiosk.



GETTING TO NAHANT MARSH

**Nahant Marsh
4220 Wapello Ave.
Davenport, IA 52802**

From Davenport, Iowa—Take Highway 22 south (Rockingham Road), turning left on Wapello Avenue (the last turn before the I-280 overpass).

From Rock Island, Illinois—Take I-280 into Iowa to the Highway 22/Rockingham Road exit. Turn right onto Highway 22, and then right onto Wapello Avenue.

**Follow Wapello Avenue toward the river.
Nahant Marsh will be on the left just before the railroad crossing.**